

reviewed by BAW on 11-5-15

BWylee

11/3/2015

Worklist: 890

<u>LAB CASE</u>	<u>ITEM</u>	<u>TASK ID</u>	<u>DESCRIPTION</u>	
M2015-3149	1	44557	6.1.1 Blood LCMS-QQQ Benzo	
P2015-2088	1	44554	6.1.1 Blood LCMS-QQQ Benzo	
P2015-2088	3	44556	6.1.1 Blood LCMS-QQQ Benzo	
P2015-2189	1	44560	6.1.1 Blood LCMS-QQQ Benzo	
P2015-2191	1	44561	6.1.1 Blood LCMS-QQQ Benzo	
P2015-2192	1	44563	6.1.1 Blood LCMS-QQQ Benzo	
P2015-2208	1	44564	6.1.1 Blood LCMS-QQQ Benzo	
P2015-2209	1	44566	6.1.1 Blood LCMS-QQQ Benzo	
P2015-2230	1	44568	6.1.1 Blood LCMS-QQQ Benzo	
P2015-2243	1	44569	6.1.1 Blood LCMS-QQQ Benzo	
P2015-2247	1	44571	6.1.1 Blood LCMS-QQQ Benzo	
P2015-2248	1	44572	6.1.1 Blood LCMS-QQQ Benzo	

Reviewed by DND on 11/06/2015. *DL*

Worklist Report

Worklist Path:	I:\CDA\CANN_BZ_Blood_DD_CS_10302015cda.wkl
Date Modified:	11/03/2015 09:43:57 AM
Date Printed:	11/03/2015 12:00:50 PM

Worklist Run Parameters

Operator Name:	62340
Run Type:	Standard Start
Part of Method to Run:	Acquisition Only
Execution for Acquisition-DA:	Synchronous
Acquisition Method Path:	D:\MassHunter\Methods
DA Method Path:	D:\MassHunter\methods
Data File Path:	D:\2015 data\Pocatello run 10-30-2015
Pre-Worklist Script:	---
Post-Worklist Script:	SCP_InstrumentStandby(){MH_Acq_Scripts.exe}
Acquisition Clean Up Script:	SCP_InstrumentStandby(){MH_Acq_Scripts.exe}
Overlapped Injection:	No
Clear sample selection after run:	Yes
Wait Time for Ready(Min):	10
Threshold Disk Value(GB):	10
Comment:	---

Plate Barcode Information

Plate	Barcode
P1	
P2	

Worklist Table

Sample Position	Sample Name	Method	Data File	Sample Type	Level Name	Comment	Info.
P1-A1	Blank	isp cannabinoids 103015.m	dd-Cann-Blank1-r001.d	Blank		AM 6.1.2 Cannabinoids by LCQQQ	
P1-A1	Blank	isp cannabinoids 103015.m	dd-Cann-Blank2-r001.d	Blank		AM 6.1.2 Cannabinoids by LCQQQ	
P1-A2	Blood: 1_5 ng/mL	isp cannabinoids 103015.m	dd-Cann-B_CAL1-r001.d	Calibration	1	AM 6.1.2 Cannabinoids by LCQQQ	c-THC @5ng/mL, all others @1 ng/mL
P1-A3	Blood: 2_10 ng/mL	isp cannabinoids 103015.m	dd-Cann-B_CAL2_r001.d	Calibration	2	AM 6.1.2 Cannabinoids by LCQQQ	c-THC @10ng/mL, all others @2 ng/mL
P1-A4	Blood: 5_25 ng/mL	isp cannabinoids 103015.m	dd-Cann-B_CAL3_r001.d	Calibration	3	AM 6.1.2 Cannabinoids by LCQQQ	c-THC @25ng/mL, all others @5 ng/mL
P1-A5	Blood: 10_50 ng/mL	isp cannabinoids 103015.m	dd-Cann-B_CAL4_r001.d	Calibration	4	AM 6.1.2 Cannabinoids by LCQQQ	c-THC @50ng/mL, all others @10 ng/mL
P1-A6	Blood: 25_125 ng/mL	isp cannabinoids 103015.m	dd-Cann-B_CAL5_r001.d	Calibration	5	AM 6.1.2 Cannabinoids by LCQQQ	c-THC @125ng/mL, all others @25 ng/mL
P1-A7	Blood: 50_250 ng/mL	isp cannabinoids 103015.m	dd-Cann-B_CAL6_r001.d	Calibration	6	AM 6.1.2 Cannabinoids by LCQQQ	c-THC @250ng/mL, all others @50 ng/mL
P1-A8	Blood: 100_500 ng/mL	isp cannabinoids 103015.m	dd-Cann-B_CAL7_r001.d	Calibration	7	AM 6.1.2 Cannabinoids by LCQQQ	c-THC @500ng/mL, all others @100 ng/mL
P1-A1	Blank	isp cannabinoids 103015.m	dd-Cann-Carryover blank1_r001.d	Blank		AM 6.1.2 Cannabinoids by LCQQQ	
P1-A9		isp cannabinoids 103015.m	dd-Cann-B-NC-r001.d	Sample			

Sample Position	Sample Name	Method	Data File	Sample Type	Level Name	Comment	Info.
	Blood Negative Control					AM 6.1.2 Cannabinoids by LCQQQ	Negative Blood UTAK Lot B0689
P1-B1	Blood 3_15ngmL	isp cannabinoids 103015.m	dd-Cann-B-3_15-r001.d	Sample		AM 6.1.2 Cannabinoids by LCQQQ	c-THC @15ng/mL, all others @3 ng/mL
P1-A9	Blank M2015-3147-1	isp cannabinoids 103015.m	dd-Cann-M2015-3147-1_BLK_r001.d	Blank		AM 6.1.2 Cannabinoids by LCQQQ	
P1-B2	M2015-3147-1	isp cannabinoids 103015.m	dd-Cann-M2015-3147-1-r001.d	Sample		AM 6.1.2 Cannabinoids by LCQQQ	Blood
P1-A9	Blank M2015-3227-1	isp cannabinoids 103015.m	dd-Cann-M2015-3227-1_BLK_r001.d	Blank		AM 6.1.2 Cannabinoids by LCQQQ	
P1-B3	M2015-3227-1	isp cannabinoids 103015.m	dd-Cann-M2015-3227-1-r001.d	Sample		AM 6.1.2 Cannabinoids by LCQQQ	Blood
P1-A9	Blank M2015-3237-2	isp cannabinoids 103015.m	dd-Cann-M2015-3237-2_BLK_r001.d	Blank		AM 6.1.2 Cannabinoids by LCQQQ	
P1-B4	M2015-3237-2	isp cannabinoids 103015.m	dd-Cann-M2015-3237-2-r001.d	Sample		AM 6.1.2 Cannabinoids by LCQQQ	Blood
P1-A9	Blank M2015-3289-1	isp cannabinoids 103015.m	dd-Cann-M2015-3289-1_BLK_r001.d	Blank		AM 6.1.2 Cannabinoids by LCQQQ	
P1-B5	M2015-3289-1	isp cannabinoids 103015.m	dd-Cann-M2015-3289-1-r001.d	Sample		AM 6.1.2 Cannabinoids by LCQQQ	Blood
P1-A9	Blank M2015-3360-1	isp cannabinoids 103015.m	dd-Cann-M2015-3360-1_BLK_r001.d	Blank		AM 6.1.2 Cannabinoids by LCQQQ	
P1-B6	M2015-3360-1	isp cannabinoids 103015.m	dd-Cann-M2015-3360-1-r001.d	Sample		AM 6.1.2 Cannabinoids by LCQQQ	Blood
P1-A9	Blank P2015-2017-1	isp cannabinoids 103015.m	dd-Cann-P2015-2017-1_BLK_r001.d	Blank		AM 6.1.2 Cannabinoids by LCQQQ	
P1-B7	P2015-2017-1	isp cannabinoids 103015.m	dd-Cann-P2015-2017-1-r001.d	Sample		AM 6.1.2 Cannabinoids by LCQQQ	Blood
P1-A9	Blank P2015-2018-1	isp cannabinoids 103015.m	dd-Cann-P2015-2018-1_BLK_r001.d	Blank		AM 6.1.2 Cannabinoids by LCQQQ	
P1-B8	P2015-2018-1	isp cannabinoids 103015.m	dd-Cann-P2015-2018-1-r001.d	Sample		AM 6.1.2 Cannabinoids by LCQQQ	Blood
P1-A9	Blank P2015-2068-1	isp cannabinoids 103015.m	dd-Cann-P2015-2068-1_BLK_r001.d	Blank		AM 6.1.2 Cannabinoids by LCQQQ	
P1-B9	P2015-2068-1	isp cannabinoids 103015.m	dd-Cann-P2015-2068-1-r001.d	Sample		AM 6.1.2 Cannabinoids by LCQQQ	Blood
P1-A9	Blank P2015-2083-1	isp cannabinoids 103015.m	dd-Cann-P2015-2083-1_BLK_r001.d	Blank		AM 6.1.2 Cannabinoids by LCQQQ	
P1-C1	P2015-2083-1	isp cannabinoids 103015.m	dd-Cann-P2015-2083-1-r001.d	Sample		AM 6.1.2 Cannabinoids by LCQQQ	Blood
P1-A9	Blank P2015-2092-1	isp cannabinoids 103015.m	dd-Cann-P2015-2092-1_BLK_r001.d	Blank		AM 6.1.2 Cannabinoids by LCQQQ	
P1-C2	P2015-2092-1	isp cannabinoids 103015.m	dd-Cann-P2015-2092-1-r001.d	Sample		AM 6.1.2 Cannabinoids by LCQQQ	Blood
P1-A9	Blank	isp cannabinoids 103015.m	dd-Cann-Carryover blank2_r001.d	Blank		AM 6.1.2 Cannabinoids by LCQQQ	
P1-C3	Blood 25_125ngmL	isp cannabinoids 103015.m	dd-Cann-B-25_125-r001.d	Sample		AM 6.1.2 Cannabinoids by LCQQQ	c-THC @125ng/mL, all others @25 ng/mL
P1-A9		isp cannabinoids 103015.m		Blank			

Sample Position	Sample Name	Method	Data File	Sample Type	Level Name	Comment	Info.
	Blank P2015-2097-1		dd-Cann-P2015-2097-1_BLK_r001.d			AM 6.1.2 Cannabinoids by LCQQQ	
P1-C4	P2015-2097-1	isp cannabinoids 103015.m	dd-Cann-P2015-2097-1-r001.d	Sample		AM 6.1.2 Cannabinoids by LCQQQ	Blood
P1-A9	Blank P2015-2184-1	isp cannabinoids 103015.m	dd-Cann-P2015-2184-1_BLK_r001.d	Blank		AM 6.1.2 Cannabinoids by LCQQQ	
P1-C5	P2015-2184-1	isp cannabinoids 103015.m	dd-Cann-P2015-2184-1-r001.d	Sample		AM 6.1.2 Cannabinoids by LCQQQ	Blood
P1-A9	Blank	isp cannabinoids 103015.m	dd-Cann-Blank3-r001.d	Blank		AM 6.1.2 Cannabinoids by LCQQQ	
P2-A9	Blank	isp cannabinoids 103015.m	cs-Cann-Blank2-r001.d	Blank		AM 6.1.2 Cannabinoids by LCQQQ	
P2-A2	Blood: 1_5 ng/mL	isp cannabinoids 103015.m	cs-Cann-B_CAL1-r001.d	Calibration	1	AM 6.1.2 Cannabinoids by LCQQQ	c-THC @5ng/mL, all others @1 ng/mL
P2-A3	Blood: 2_10 ng/mL	isp cannabinoids 103015.m	cs-Cann-B_CAL2_r001.d	Calibration	2	AM 6.1.2 Cannabinoids by LCQQQ	c-THC @10ng/mL, all others @2 ng/mL
P2-A4	Blood: 5_25 ng/mL	isp cannabinoids 103015.m	cs-Cann-B_CAL3_r001.d	Calibration	3	AM 6.1.2 Cannabinoids by LCQQQ	c-THC @25ng/mL, all others @5 ng/mL
P2-A5	Blood: 10_50 ng/mL	isp cannabinoids 103015.m	cs-Cann-B_CAL4_r001.d	Calibration	4	AM 6.1.2 Cannabinoids by LCQQQ	c-THC @50ng/mL, all others @10 ng/mL
P2-A6	Blood: 25_125 ng/mL	isp cannabinoids 103015.m	cs-Cann-B_CAL5_r001.d	Calibration	5	AM 6.1.2 Cannabinoids by LCQQQ	c-THC @125ng/mL, all others @25 ng/mL
P2-A7	Blood: 50_250 ng/mL	isp cannabinoids 103015.m	cs-Cann-B_CAL6_r001.d	Calibration	6	AM 6.1.2 Cannabinoids by LCQQQ	c-THC @250ng/mL, all others @50 ng/mL
P2-A8	Blood: 100_500 ng/mL	isp cannabinoids 103015.m	cs-Cann-B_CAL7_r001.d	Calibration	7	AM 6.1.2 Cannabinoids by LCQQQ	c-THC @500ng/mL, all others @100 ng/mL
P2-A1	Blank	isp cannabinoids 103015.m	cs-Cann-Carryover blank1_r001.d	Blank		AM 6.1.2 Cannabinoids by LCQQQ	
P2-A9	Blood Negative Control	isp cannabinoids 103015.m	cs-Cann-B-NC-r001.d	Sample		AM 6.1.2 Cannabinoids by LCQQQ	Negative Blood UTAK Lot B0689
P2-B1	Blood 3_15ng/mL	isp cannabinoids 103015.m	cs-Cann-B-3_15-r001.d	Sample		AM 6.1.2 Cannabinoids by LCQQQ	c-THC @15ng/mL, all others @3 ng/mL
P2-A9	Blank M2015-2859-1	isp cannabinoids 103015.m	cs-Cann-M2015-2859-1_BLK_r001.d	Blank		AM 6.1.2 Cannabinoids by LCQQQ	
P2-B2	M2015-2859-1	isp cannabinoids 103015.m	cs-Cann-M2015-2859-r001.d	Sample		AM 6.1.2 Cannabinoids by LCQQQ	Blood
P2-A9	Blank M2015-3180-1	isp cannabinoids 103015.m	cs-Cann-M2015-3180-1_BLK_r001.d	Blank		AM 6.1.2 Cannabinoids by LCQQQ	
P2-B3	M2015-3180-1	isp cannabinoids 103015.m	cs-Cann-M2015-3180-1-r001.d	Sample		AM 6.1.2 Cannabinoids by LCQQQ	Blood
P2-A9	Blank M2015-3430-1	isp cannabinoids 103015.m	cs-Cann-M2015-3430-1_BLK_r001.d	Blank		AM 6.1.2 Cannabinoids by LCQQQ	
P2-B4	M2015-3430-1	isp cannabinoids 103015.m	cs-Cann-M2015-3430-1-r001.d	Sample		AM 6.1.2 Cannabinoids by LCQQQ	Blood
P2-A9		isp cannabinoids 103015.m	cs-Cann-P2015-2006-1_BLK_r001.d	Blank			

Sample Position	Sample Name	Method	Data File	Sample Type	Level Name	Comment	Info.
	Blank P2015-2006-1					AM 6.1.2 Cannabinoids by LCQQQ	
P2-B5	P2015-2006-1	isp cannabinoids 103015.m	cs-Cann-P2015-2006-1-r001.d	Sample		AM 6.1.2 Cannabinoids by LCQQQ	Blood
P2-A9	Blank P2015-2088-2	isp cannabinoids 103015.m	cs-Cann-P2015-2088-2_BLK_r001.d	Blank		AM 6.1.2 Cannabinoids by LCQQQ	
P2-B6	P2015-2088-2	isp cannabinoids 103015.m	cs-Cann-P2015-2088-2-r001.d	Sample		AM 6.1.2 Cannabinoids by LCQQQ	Blood
P2-A9	Blank P2015-2128-1	isp cannabinoids 103015.m	cs-Cann-P2015-2128-11_BLK_r001.d	Blank		AM 6.1.2 Cannabinoids by LCQQQ	
P2-B7	P2015-2128-1	isp cannabinoids 103015.m	cs-Cann-P2015-2128-1-r001.d	Sample		AM 6.1.2 Cannabinoids by LCQQQ	Blood
P2-A9	Blank P2015-2191-1	isp cannabinoids 103015.m	cs-Cann-P2015-2191-1_BLK_r001.d	Blank		AM 6.1.2 Cannabinoids by LCQQQ	
P2-B8	P2015-2191-1	isp cannabinoids 103015.m	cs-Cann-P2015-2191-1-r001.d	Sample		AM 6.1.2 Cannabinoids by LCQQQ	Blood
P2-A9	Blank P2015-2208-1	isp cannabinoids 103015.m	cs-Cann-P2015-2208-1_BLK_r001.d	Blank		AM 6.1.2 Cannabinoids by LCQQQ	
P2-B9	P2015-2208-1	isp cannabinoids 103015.m	cs-Cann-P2015-2208-1-r001.d	Sample		AM 6.1.2 Cannabinoids by LCQQQ	Blood
P2-A9	Blank P2015-2209-1	isp cannabinoids 103015.m	cs-Cann-P2015-2209-1_BLK_r001.d	Blank		AM 6.1.2 Cannabinoids by LCQQQ	
P2-C1	P2015-2209-1	isp cannabinoids 103015.m	cs-Cann-P2015-2209-1-r001.d	Sample		AM 6.1.2 Cannabinoids by LCQQQ	Blood
P2-A9	Blank P2015-2243-1	isp cannabinoids 103015.m	cs-Cann-P2015-2243-1_BLK_r001.d	Blank		AM 6.1.2 Cannabinoids by LCQQQ	
P2-C2	P2015-2243-1	isp cannabinoids 103015.m	cs-Cann-P2015-2243-1-r001.d	Sample		AM 6.1.2 Cannabinoids by LCQQQ	Blood
P2-A1	Blank	isp cannabinoids 103015.m	cs-Cann-Carryover blank2_r001.d	Blank		AM 6.1.2 Cannabinoids by LCQQQ	
P2-C3	Blood 25_125ng/mL	isp cannabinoids 103015.m	cs-Cann-B-25_125-r001.d	Sample		AM 6.1.2 Cannabinoids by LCQQQ	c-THC @125ng/mL, all others @25 ng/mL
P2-A9	Blank P2015-2248-1	isp cannabinoids 103015.m	cs-Cann-P2015-2248-1_BLK_r001.d	Blank		AM 6.1.2 Cannabinoids by LCQQQ	
P2-C4	P2015-2248-1	isp cannabinoids 103015.m	cs-Cann-P2015-2248-1-r001.d	Sample		AM 6.1.2 Cannabinoids by LCQQQ	Blood
P2-A9	Blank P2015-2267-1	isp cannabinoids 103015.m	cs-Cann-P2015-2267-1_BLK_r001.d	Blank		AM 6.1.2 Cannabinoids by LCQQQ	
P2-C5	P2015-2267-1	isp cannabinoids 103015.m	cs-Cann-P2015-2267-1-r001.d	Sample		AM 6.1.2 Cannabinoids by LCQQQ	Blood
P2-A9	Blank P2015-1673-1	isp cannabinoids 103015.m	cs-Cann-P2015-1673-1_BLK_r001.d	Blank		AM 6.1.2 Cannabinoids by LCQQQ	
P2-C6	P2015-1673-1	isp cannabinoids 103015.m	cs-Cann-P2015-1673-1-r001.d	Sample		AM 6.1.2 Cannabinoids by LCQQQ	Blood
P2-A9	Blank P2015-1677-1	isp cannabinoids 103015.m	cs-Cann-P2015-1677-1_BLK_r001.d	Blank		AM 6.1.2 Cannabinoids by LCQQQ	
P2-C7	P2015-1677-1	isp cannabinoids 103015.m	cs-Cann-P2015-1677-1-r001.d	Sample		AM 6.1.2 Cannabinoids by LCQQQ	Blood
P2-A9		isp cannabinoids 103015.m	cs-Cann-P2015-1794-1_BLK_r001.d	Blank			

Sample Position	Sample Name	Method	Data File	Sample Type	Level Name	Comment	Info.
	Blank P2015-1794-1					AM 6.1.2 Cannabinoids by LCQQQ	
P2-C8	P2015-1794-1	isp cannabinoids 103015.m	cs-Cann-P2015-1794-1-r001.d	Sample		AM 6.1.2 Cannabinoids by LCQQQ	Blood
P1-F9	Blank	D:\MassHunter\methods\Benzos_Z_Drugs_ACN_FA_ISP.m	dd-Blank1-r002.d	Blank		AM 6.1.1 Benzo and Z by LCQQQ	
P1-F9	Blank	D:\MassHunter\methods\Benzos_Z_Drugs_ACN_FA_ISP.m	dd-Blank2-r002.d	Blank		AM 6.1.1 Benzo and Z by LCQQQ	
P1-F8	5 ng/mL	D:\MassHunter\methods\Benzos_Z_Drugs_ACN_FA_ISP.m	dd-5 ng/mL-r001.d	Calibration	1	AM 6.1.1 Benzo and Z by LCQQQ	
P1-F7	10 ng/mL	D:\MassHunter\methods\Benzos_Z_Drugs_ACN_FA_ISP.m	dd-10 ng/mL-r001.d	Calibration	2	AM 6.1.1 Benzo and Z by LCQQQ	
P1-F6	25 ng/mL	D:\MassHunter\methods\Benzos_Z_Drugs_ACN_FA_ISP.m	dd-25 ng/mL_r001.d	Calibration	3	AM 6.1.1 Benzo and Z by LCQQQ	
P1-F5	50 ng/mL	D:\MassHunter\methods\Benzos_Z_Drugs_ACN_FA_ISP.m	dd-50 ng/mL_r001.d	Calibration	4	AM 6.1.1 Benzo and Z by LCQQQ	
P1-F4	100 ng/mL	D:\MassHunter\methods\Benzos_Z_Drugs_ACN_FA_ISP.m	dd-100 ng/mL_r001.d	Calibration	5	AM 6.1.1 Benzo and Z by LCQQQ	
P1-F3	500 ng/mL	D:\MassHunter\methods\Benzos_Z_Drugs_ACN_FA_ISP.m	dd-500 ng/mL_r001.d	Calibration	6	AM 6.1.1 Benzo and Z by LCQQQ	
P1-F2	1000 ng/mL	D:\MassHunter\methods\Benzos_Z_Drugs_ACN_FA_ISP.m	dd-1000 ng/mL_r001.d	Calibration	7	AM 6.1.1 Benzo and Z by LCQQQ	
P1-F1	3000 ng/mL	D:\MassHunter\methods\Benzos_Z_Drugs_ACN_FA_ISP.m	dd-3000 ng/mL_r001.d	Calibration	8	AM 6.1.1 Benzo and Z by LCQQQ	
P1-F9	Blank	D:\MassHunter\methods\Benzos_Z_Drugs_ACN_FA_ISP.m	dd-Carryover blank1_r002.d	Blank		AM 6.1.1 Benzo and Z by LCQQQ	
P1-E9	Negative Blood Control	D:\MassHunter\methods\Benzos_Z_Drugs_ACN_FA_ISP.m	dd-NC-B_r001.d	Sample		AM 6.1.1 Benzo and Z by LCQQQ	UTAK Negative Whole Blood LOT B0689
P1-E8	Positive Blood Control	D:\MassHunter\methods\Benzos_Z_Drugs_ACN_FA_ISP.m	dd-PC-B-BZ-r001.d	Sample		AM 6.1.1 Benzo and Z by LCQQQ	200 ng/mL Benzodiazepines Mix Cerilliant lot FE012413-02 in neg LOT B0130
P1-E9	Blank - M2015-3402-2	D:\MassHunter\methods\Benzos_Z_Drugs_ACN_FA_ISP.m	dd-Carryover blank-M2015-3402-2_r001.d	Blank		AM 6.1.1 Benzo and Z by LCQQQ	
P1-E7	M2015-3402-2	D:\MassHunter\methods\Benzos_Z_Drugs_ACN_FA_ISP.m	dd-M2015-3402-2-r001.d	Sample		AM 6.1.1 Benzo and Z by LCQQQ	Blood
P1-E9	Blank - P2015-2018-1	D:\MassHunter\methods\Benzos_Z_Drugs_ACN_FA_ISP.m	dd-Carryover blank-P2015-2018-1_r001.d	Blank		AM 6.1.1 Benzo and Z by LCQQQ	
P1-E6	P2015-2018-1	D:\MassHunter\methods\Benzos_Z_Drugs_ACN_FA_ISP.m	dd-P2015-2018-1-r001.d	Sample		AM 6.1.1 Benzo and Z by LCQQQ	Blood
P1-E9	Blank - P2015-2025-1	D:\MassHunter\methods\Benzos_Z_Drugs_ACN_FA_ISP.m	dd-Carryover blank-P2015-2025-1_r001.d	Blank		AM 6.1.1 Benzo and Z by LCQQQ	
P1-E5	P2015-2025-1	D:\MassHunter\methods\Benzos_Z_Drugs_ACN_FA_ISP.m	dd-P2015-2025-1-r001.d	Sample		AM 6.1.1 Benzo and Z by LCQQQ	Blood
P1-E9	Blank - P2015-2033-1	D:\MassHunter\methods\Benzos_Z_Drugs_ACN_FA_ISP.m	dd-Carryover blank-P2015-2033-1_r001.d	Blank		AM 6.1.1 Benzo and Z by LCQQQ	
P1-E4	P2015-2033-1	D:\MassHunter\methods\Benzos_Z_Drugs_ACN_FA_ISP.m	dd-P2015-2033-1-r001.d	Sample		AM 6.1.1 Benzo and Z by LCQQQ	Blood
P1-E9	Blank - P2015-2034-1	D:\MassHunter\methods\Benzos_Z_Drugs_ACN_FA_ISP.m	dd-Carryover blank-P2015-2034-1_r001.d	Blank		AM 6.1.1 Benzo and Z by LCQQQ	
P1-E3		D:\MassHunter\methods\Benzos_Z_Drugs_ACN_FA_ISP.m		Sample			Blood

Sample Position	Sample Name	Method	Data File	Sample Type	Level Name	Comment	Info.
	P2015-2034-1		dd-P2015-2034-1-r001.d			AM 6.1.1 Benzo and Z by LCQQQ	
P1-E9	Blank - P2015-2083-1	D:\MassHunter\methods\Benzos_Z_Drugs_ACN_FA_ISP.m	dd-Carryover blank-P2015-2083-1_r001.d	Blank		AM 6.1.1 Benzo and Z by LCQQQ	
P1-E2	P2015-2083-1	D:\MassHunter\methods\Benzos_Z_Drugs_ACN_FA_ISP.m	dd-P2015-2083-1-r001.d	Sample		AM 6.1.1 Benzo and Z by LCQQQ	Blood
P1-E9	Blank - P2015-2092-1	D:\MassHunter\methods\Benzos_Z_Drugs_ACN_FA_ISP.m	dd-Carryover blank-P2015-2092-1_r001.d	Blank		AM 6.1.1 Benzo and Z by LCQQQ	
P1-E1	P2015-2092-1	D:\MassHunter\methods\Benzos_Z_Drugs_ACN_FA_ISP.m	dd-P2015-2092-1-r001.d	Sample		AM 6.1.1 Benzo and Z by LCQQQ	Blood
P1-E9	Blank - P2015-2113-1	D:\MassHunter\methods\Benzos_Z_Drugs_ACN_FA_ISP.m	dd-Carryover blank-P2015-2113-1_r001.d	Blank		AM 6.1.1 Benzo and Z by LCQQQ	
P1-D9	P2015-2113-1	D:\MassHunter\methods\Benzos_Z_Drugs_ACN_FA_ISP.m	dd-P2015-2113-1-r001.d	Sample		AM 6.1.1 Benzo and Z by LCQQQ	Blood
P1-E9	Blank - P2015-2123-1	D:\MassHunter\methods\Benzos_Z_Drugs_ACN_FA_ISP.m	dd-Carryover blank-P2015-2123-1_r001.d	Blank		AM 6.1.1 Benzo and Z by LCQQQ	
P1-D8	P2015-2123-1	D:\MassHunter\methods\Benzos_Z_Drugs_ACN_FA_ISP.m	dd-P2015-2123-1-r001.d	Sample		AM 6.1.1 Benzo and Z by LCQQQ	Blood
P1-E9	Blank - P2015-2161-1	D:\MassHunter\methods\Benzos_Z_Drugs_ACN_FA_ISP.m	dd-Carryover blank-P2015-2161-1_r001.d	Blank		AM 6.1.1 Benzo and Z by LCQQQ	
P1-D7	P2015-2161-1	D:\MassHunter\methods\Benzos_Z_Drugs_ACN_FA_ISP.m	dd-P2015-2161-1-r001.d	Sample		AM 6.1.1 Benzo and Z by LCQQQ	Blood
P1-F9	Blank	D:\MassHunter\methods\Benzos_Z_Drugs_ACN_FA_ISP.m	dd-Carryover blank3_r001.d	Blank		AM 6.1.1 Benzo and Z by LCQQQ	
P2-F9	Blank	D:\MassHunter\methods\Benzos_Z_Drugs_ACN_FA_ISP.m	cs-Blank2-r002.d	Blank		AM 6.1.1 Benzo and Z by LCQQQ	
P2-F8	5 ng/mL	D:\MassHunter\methods\Benzos_Z_Drugs_ACN_FA_ISP.m	cs-5 ng/mL-r001.d	Calibration	1	AM 6.1.1 Benzo and Z by LCQQQ	
P2-F7	10 ng/mL	D:\MassHunter\methods\Benzos_Z_Drugs_ACN_FA_ISP.m	cs-10 ng/mL-r001.d	Calibration	2	AM 6.1.1 Benzo and Z by LCQQQ	
P2-F6	25 ng/mL	D:\MassHunter\methods\Benzos_Z_Drugs_ACN_FA_ISP.m	cs-25 ng/mL_r001.d	Calibration	3	AM 6.1.1 Benzo and Z by LCQQQ	
P2-F5	50 ng/mL	D:\MassHunter\methods\Benzos_Z_Drugs_ACN_FA_ISP.m	cs-50 ng/mL_r001.d	Calibration	4	AM 6.1.1 Benzo and Z by LCQQQ	
P2-F4	100 ng/mL	D:\MassHunter\methods\Benzos_Z_Drugs_ACN_FA_ISP.m	cs-100 ng/mL_r001.d	Calibration	5	AM 6.1.1 Benzo and Z by LCQQQ	
P2-F3	500 ng/mL	D:\MassHunter\methods\Benzos_Z_Drugs_ACN_FA_ISP.m	cs-500 ng/mL_r001.d	Calibration	6	AM 6.1.1 Benzo and Z by LCQQQ	
P2-F2	1000 ng/mL	D:\MassHunter\methods\Benzos_Z_Drugs_ACN_FA_ISP.m	cs-1000 ng/mL_r001.d	Calibration	7	AM 6.1.1 Benzo and Z by LCQQQ	
P2-F1	3000 ng/mL	D:\MassHunter\methods\Benzos_Z_Drugs_ACN_FA_ISP.m	cs-3000 ng/mL_r001.d	Calibration	8	AM 6.1.1 Benzo and Z by LCQQQ	
P2-F9	Blank	D:\MassHunter\methods\Benzos_Z_Drugs_ACN_FA_ISP.m	cs-Carryover blank1_r002.d	Blank		AM 6.1.1 Benzo and Z by LCQQQ	
P2-E9	Negative Blood Control	D:\MassHunter\methods\Benzos_Z_Drugs_ACN_FA_ISP.m	cs-NC-B_r001.d	Sample		AM 6.1.1 Benzo and Z by LCQQQ	UTAK Negative Whole Blood LOT B0689
P2-E8	Positive Blood Control	D:\MassHunter\methods\Benzos_Z_Drugs_ACN_FA_ISP.m	cs-PC-B-BZ-r001.d	Sample		AM 6.1.1 Benzo and Z by LCQQQ	200 ng/mL Benzodiazepines Mix Cerilliant lot FE012413-02 in neg LOT B0130
P2-E9		D:\MassHunter\methods\Benzos_Z_Drugs_ACN_FA_ISP.m		Blank			

Sample Position	Sample Name	Method	Data File	Sample Type	Level Name	Comment	Info.
	Blank - M2015-3149-1		cs-Carryover blank-M2015-3149-1_r001.d			AM 6.1.1 Benzo and Z by LCQQQ	
P2-E7	M2015-3149-1	D:\MassHunter\methods\Benzos_Z_Drugs_ACN_FA_ISP.m	cs-M2015-3149-1-r001.d	Sample		AM 6.1.1 Benzo and Z by LCQQQ	Blood
P2-E9	Blank - P2015-2088-1	D:\MassHunter\methods\Benzos_Z_Drugs_ACN_FA_ISP.m	cs-Carryover blank-P2015-2088-1_r001.d	Blank		AM 6.1.1 Benzo and Z by LCQQQ	
P2-E6	P2015-2088-1	D:\MassHunter\methods\Benzos_Z_Drugs_ACN_FA_ISP.m	cs-P2015-2088-1-r001.d	Sample		AM 6.1.1 Benzo and Z by LCQQQ	Blood
P2-E9	Blank - P2015-2088-3	D:\MassHunter\methods\Benzos_Z_Drugs_ACN_FA_ISP.m	cs-Carryover blank-P2015-2088-3_r001.d	Blank		AM 6.1.1 Benzo and Z by LCQQQ	
P2-E5	P2015-2088-3	D:\MassHunter\methods\Benzos_Z_Drugs_ACN_FA_ISP.m	cs-P2015-2088-3-r001.d	Sample		AM 6.1.1 Benzo and Z by LCQQQ	Blood
P2-E9	Blank - P2015-2189-1	D:\MassHunter\methods\Benzos_Z_Drugs_ACN_FA_ISP.m	cs-Carryover blank-P2015-2189-1_r001.d	Blank		AM 6.1.1 Benzo and Z by LCQQQ	
P2-E4	P2015-2189-1	D:\MassHunter\methods\Benzos_Z_Drugs_ACN_FA_ISP.m	cs-P2015-2189-1-r001.d	Sample		AM 6.1.1 Benzo and Z by LCQQQ	Blood
P2-E9	Blank - P2015-2191-1	D:\MassHunter\methods\Benzos_Z_Drugs_ACN_FA_ISP.m	cs-Carryover blank-P2015-2191-1_r001.d	Blank		AM 6.1.1 Benzo and Z by LCQQQ	
P2-E3	P2015-2191-1	D:\MassHunter\methods\Benzos_Z_Drugs_ACN_FA_ISP.m	cs-P2015-2191-1-r001.d	Sample		AM 6.1.1 Benzo and Z by LCQQQ	Blood
P2-E9	Blank - P2015-2192-1	D:\MassHunter\methods\Benzos_Z_Drugs_ACN_FA_ISP.m	cs-Carryover blank-P2015-2192-1_r001.d	Blank		AM 6.1.1 Benzo and Z by LCQQQ	
P2-E2	P2015-2192-1	D:\MassHunter\methods\Benzos_Z_Drugs_ACN_FA_ISP.m	cs-P2015-2192-1-r001.d	Sample		AM 6.1.1 Benzo and Z by LCQQQ	Blood
P2-E9	Blank - P2015-2208-1	D:\MassHunter\methods\Benzos_Z_Drugs_ACN_FA_ISP.m	cs-Carryover blank-P2015-2208-1_r001.d	Blank		AM 6.1.1 Benzo and Z by LCQQQ	
P2-E1	P2015-2208-1	D:\MassHunter\methods\Benzos_Z_Drugs_ACN_FA_ISP.m	cs-P2015-2208-1-r001.d	Sample		AM 6.1.1 Benzo and Z by LCQQQ	Blood
P2-E9	Blank - P2015-2209-1	D:\MassHunter\methods\Benzos_Z_Drugs_ACN_FA_ISP.m	cs-Carryover blank-P2015-2209-1_r001.d	Blank		AM 6.1.1 Benzo and Z by LCQQQ	
P2-D9	P2015-2209-1	D:\MassHunter\methods\Benzos_Z_Drugs_ACN_FA_ISP.m	cs-P2015-2209-1-r001.d	Sample		AM 6.1.1 Benzo and Z by LCQQQ	Blood
P2-E9	Blank - P2015-2230-1	D:\MassHunter\methods\Benzos_Z_Drugs_ACN_FA_ISP.m	cs-Carryover blank-P2015-2230-1_r001.d	Blank		AM 6.1.1 Benzo and Z by LCQQQ	
P2-D8	P2015-2230-1	D:\MassHunter\methods\Benzos_Z_Drugs_ACN_FA_ISP.m	cs-P2015-2230-1-r001.d	Sample		AM 6.1.1 Benzo and Z by LCQQQ	Blood
P2-E9	Blank - P2015-2243-1	D:\MassHunter\methods\Benzos_Z_Drugs_ACN_FA_ISP.m	cs-Carryover blank-P2015-2243-1_r001.d	Blank		AM 6.1.1 Benzo and Z by LCQQQ	
P2-D7	P2015-2243-1	D:\MassHunter\methods\Benzos_Z_Drugs_ACN_FA_ISP.m	cs-P2015-2243-1-r001.d	Sample		AM 6.1.1 Benzo and Z by LCQQQ	Blood
P2-E9	Blank - P2015-2247-1	D:\MassHunter\methods\Benzos_Z_Drugs_ACN_FA_ISP.m	cs-Carryover blank-P2015-2247-1_r001.d	Blank		AM 6.1.1 Benzo and Z by LCQQQ	
P2-D6	P2015-2247-1	D:\MassHunter\methods\Benzos_Z_Drugs_ACN_FA_ISP.m	cs-P2015-2247-1-r001.d	Sample		AM 6.1.1 Benzo and Z by LCQQQ	Blood
P2-E9	Blank - P2015-2248-1	D:\MassHunter\methods\Benzos_Z_Drugs_ACN_FA_ISP.m	cs-Carryover blank-P2015-2248-1_r001.d	Blank		AM 6.1.1 Benzo and Z by LCQQQ	
P2-D5	P2015-2248-1	D:\MassHunter\methods\Benzos_Z_Drugs_ACN_FA_ISP.m	cs-P2015-2248-1-r001.d	Sample		AM 6.1.1 Benzo and Z by LCQQQ	Blood
P2-F9	Blank	D:\MassHunter\methods\Benzos_Z_Drugs_ACN_FA_ISP.m	cs-Carryover blank3_r002.d	Blank		AM 6.1.1 Benzo and Z by LCQQQ	

ISP FORENSICS

Pocatello

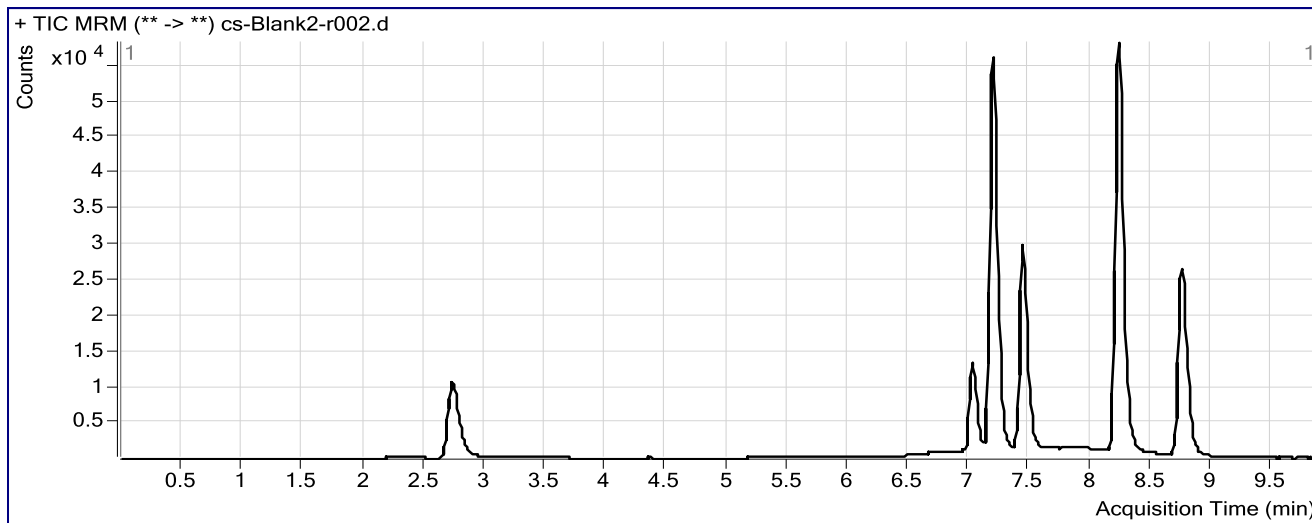
Benzodiazepine Analysis Report

Batch Data Path C:\MassHunter\Data\COMBINED\10-30-15\103015 CS\BZ\QuantResults\103015-BZ-B-CS.batch.bi
Analysis Time 11/5/2015 11:30 AM **Analyst Name** datastor
Report Time 11/5/2015 11:34 AM **Reporter Name** ISPUser
Last Calib Update 11/5/2015 11:30 AM **Batch State** Processed

Analysis Info

Acq Time 2015-10-31 16:37 **Data File** cs-Blank2-r002.d
Sample Type Blank **Sample Name** Blank
Dilution 1 **Acq Method** Benzos_Z_Drugs_ACN_FA_ISP.m
Position P2-F9 **Sample Info**
Inj Vol -1 **Comment** AM 6.1.1 Benzo and Z by LCQQQ

Sample Chromatogram



ISP FORENSICS

Pocatello

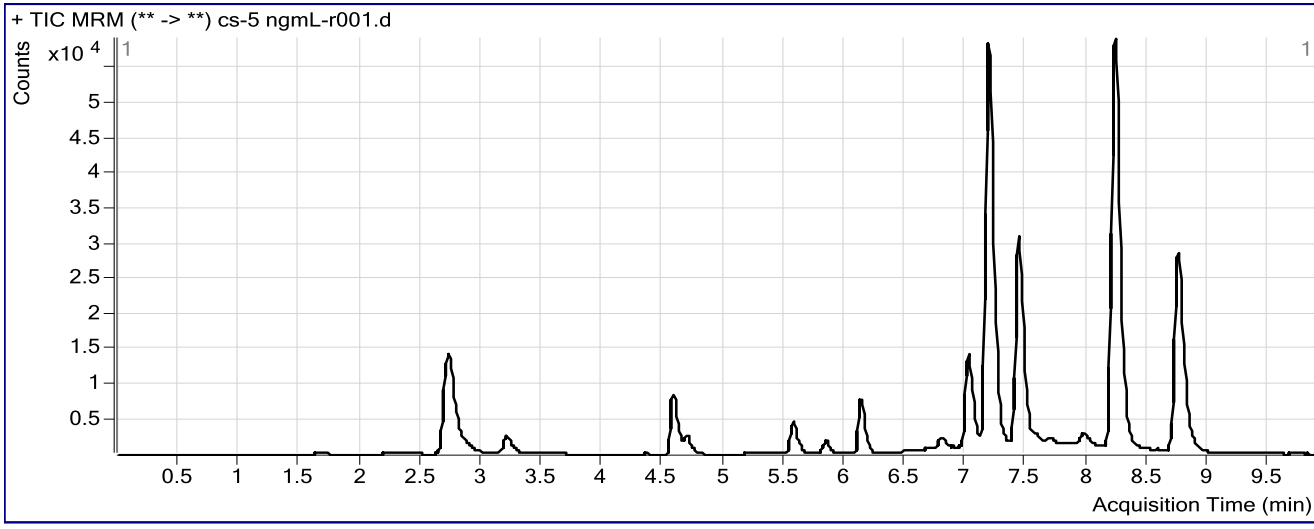
Benzodiazepine Analysis Report

Batch Data Path	C:\MassHunter\Data\COMBINED\10-30-15\103015 CS\BZ\QuantResults\103015-BZ-B-CS.batch.bin		
Analysis Time	11/5/2015 11:30 AM	Analyst Name	datastor
Report Time	11/5/2015 11:34 AM	Reporter Name	ISPUser
Last Calib Update	11/5/2015 11:30 AM	Batch State	Processed

Analysis Info

Acq Time	2015-10-31 16:51	Data File	cs-5 ngmL-r001.d
Sample Type	Calibration	Sample Name	5 ngmL
Dilution	1	Acq Method	Benzos_Z_Drugs_ACN_FA_ISP.m
Position	P2-F8	Sample Info	
Inj Vol	-1	Comment	AM 6.1.1 Benzo and Z by LCQQQ

Sample Chromatogram



Results

Compound	ISTD Compound	RT	Response	ISTD Resp	Resp Ratio	Final Conc
7-Aminoclonazepam	7-Aminoflunitrazepam-D7 ISTD	1.673	1097	74162	0.0148	4.8986
7-Aminoflunitrazepam	7-Aminoflunitrazepam-D7 ISTD	2.867	3800	74162	0.0512	4.1800
zopiclone	Oxazepam D5 ISTD	3.206	8062	117958	0.0683	4.9905
zolpidem	Oxazepam D5 ISTD	4.575	25430	117958	0.2156	4.9638
Chlordiazepoxide	Nordiazepam-D5 ISTD	4.696	7705	34876	0.2209	5.1804
quetiapine	Oxazepam D5 ISTD	5.569	10524	117958	0.0892	4.8639
Midazolam	Clonazepam-D4 ISTD	5.842	5878	90426	0.0650	5.0317
Flurazepam	Diazepam-D5 ISTD	6.120	25195	78731	0.3200	5.0483
Nitrazepam	Clonazepam-D4 ISTD	6.796	4654	90426	0.0515	5.4902
alpha-Hydroxyalprazolam	alphahydroxyalprazolam-D5 ISTD	7.053	882	39280	0.0225	5.0609
alpha-hydroxytriazolam	Nordiazepam-D5 ISTD	7.110	1089	34876	0.0312	5.4071
Oxazepam	Oxazepam D5 ISTD	7.225	4922	117958	0.0417	4.9985
Nordiazepam	Nordiazepam-D5 ISTD	7.277	2751	34876	0.0789	5.5027
Clonazepam	Clonazepam-D4 ISTD	7.475	3585	90426	0.0396	5.0931
Lorazepam	Oxazepam D5 ISTD	7.575	1337	117958	0.0113	5.3385
Alprazolam	alphahydroxyalprazolam-D5 ISTD	7.688	2713	39280	0.0691	5.0587
Flunitrazepam	Clonazepam-D4 ISTD	7.964	5891	90426	0.0651	4.9281
Temazepam	Oxazepam D5 ISTD	8.279	9490	117958	0.0805	4.9101
Diazepam	Diazepam-D5 ISTD	8.848	3944	78731	0.0501	5.9004

ISP FORENSICS

Pocatello

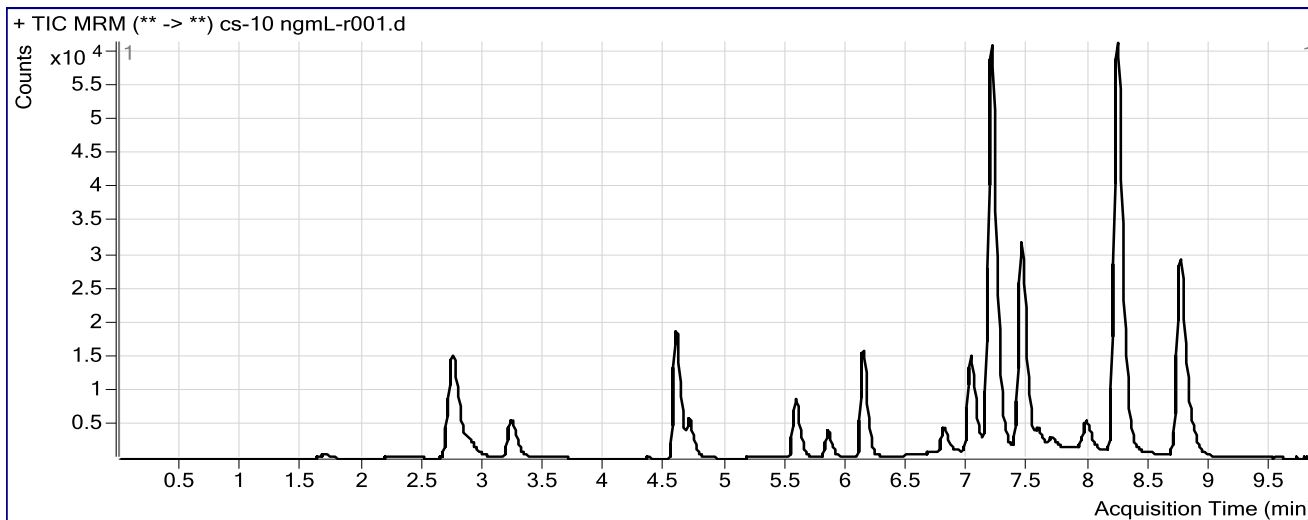
Benzodiazepine Analysis Report

Batch Data Path	C:\MassHunter\Data\COMBINED\10-30-15\103015 CS\BZ\QuantResults\103015-BZ-B-CS.batch.bin		
Analysis Time	11/5/2015 11:30 AM	Analyst Name	datastor
Report Time	11/5/2015 11:34 AM	Reporter Name	ISPUser
Last Calib Update	11/5/2015 11:30 AM	Batch State	Processed

Analysis Info

Acq Time	2015-10-31 17:06	Data File	cs-10 ngmL-r001.d
Sample Type	Calibration	Sample Name	10 ngmL
Dilution	1	Acq Method	Benzos_Z_Drugs_ACN_FA_ISP.m
Position	P2-F7	Sample Info	
Inj Vol	-1	Comment	AM 6.1.1 Benzo and Z by LCQQQ

Sample Chromatogram



Results

Compound	ISTD Compound	RT	Response	ISTD Resp	Resp Ratio	Final Conc
7-Aminoclonazepam	7-Aminoflunitrazepam-D7 ISTD	1.690	2445	80603	0.0303	11.0034
7-Aminoflunitrazepam	7-Aminoflunitrazepam-D7 ISTD	2.885	8050	80603	0.0999	9.0556
zopiclone	Oxazepam D5 ISTD	3.231	18909	118199	0.1600	10.0153
zolpidem	Oxazepam D5 ISTD	4.583	55997	118199	0.4737	10.0158
Chlordiazepoxide	Nordiazepam-D5 ISTD	4.704	16237	35498	0.4574	9.3961
quetiapine	Oxazepam D5 ISTD	5.569	20526	118199	0.1737	9.7539
Midazolam	Clonazepam-D4 ISTD	5.842	12128	91715	0.1322	9.7723
Flurazepam	Diazepam-D5 ISTD	6.128	51963	81732	0.6358	9.6475
Nitrazepam	Clonazepam-D4 ISTD	6.796	10359	91715	0.1130	10.7049
alpha-Hydroxyalprazolam	alphahydroxyalprazolam-D5 ISTD	7.061	1924	39998	0.0481	10.1217
alpha-hydroxytriazolam	Nordiazepam-D5 ISTD	7.110	1856	35498	0.0523	8.6223
Oxazepam	Oxazepam D5 ISTD	7.234	10744	118199	0.0909	9.9430
Nordiazepam	Nordiazepam-D5 ISTD	7.277	5606	35498	0.1579	10.1036
Clonazepam	Clonazepam-D4 ISTD	7.475	8447	91715	0.0921	10.0162
Lorazepam	Oxazepam D5 ISTD	7.575	3296	118199	0.0279	11.1577
Alprazolam	alphahydroxyalprazolam-D5 ISTD	7.688	5532	39998	0.1383	9.8233
Flunitrazepam	Clonazepam-D4 ISTD	7.973	13908	91715	0.1516	10.1982
Temazepam	Oxazepam D5 ISTD	8.288	19275	118199	0.1631	9.4197
Diazepam	Diazepam-D5 ISTD	8.848	8873	81732	0.1086	10.2928

ISP FORENSICS

Pocatello

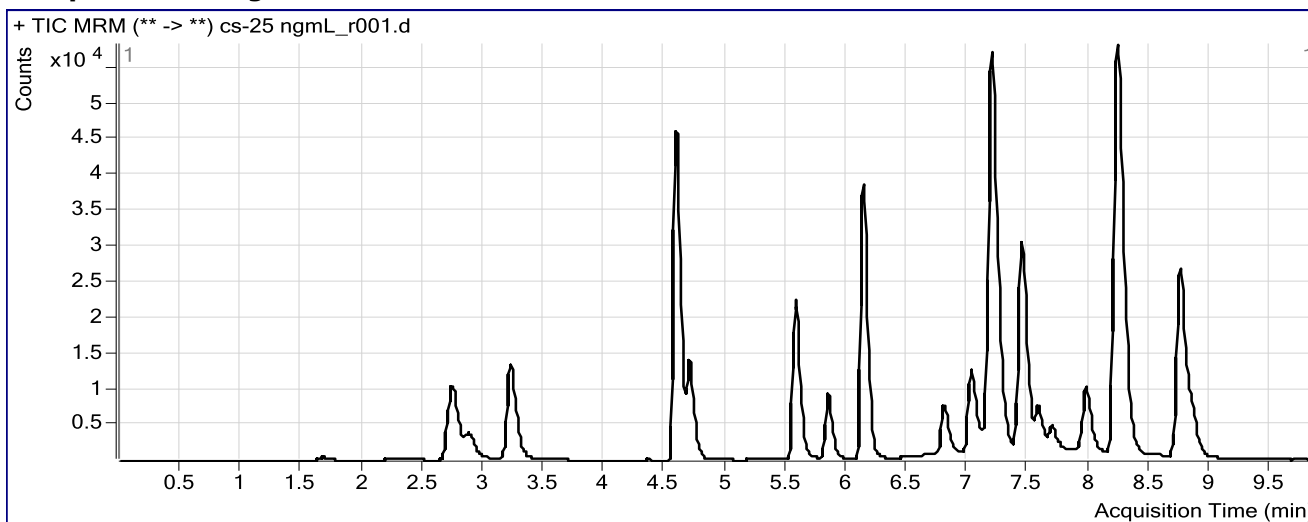
Benzodiazepine Analysis Report

Batch Data Path	C:\MassHunter\Data\COMBINED\10-30-15\103015 CS\BZ\QuantResults\103015-BZ-B-CS.batch.bin		
Analysis Time	11/5/2015 11:30 AM	Analyst Name	datastor
Report Time	11/5/2015 11:34 AM	Reporter Name	ISPUser
Last Calib Update	11/5/2015 11:30 AM	Batch State	Processed

Analysis Info

Acq Time	2015-10-31 17:20	Data File	cs-25 ngmL_r001.d
Sample Type	Calibration	Sample Name	25 ngmL
Dilution	1	Acq Method	Benzos_Z_Drugs_ACN_FA_ISP.m
Position	P2-F6	Sample Info	
Inj Vol	-1	Comment	AM 6.1.1 Benzo and Z by LCQQQ

Sample Chromatogram



Results

Compound	ISTD Compound	RT	Response	ISTD Resp	Resp Ratio	Final Conc
7-Aminoclonazepam	7-Aminoflunitrazepam-D7 ISTD	1.682	2785	48378	0.0576	21.6243
7-Aminoflunitrazepam	7-Aminoflunitrazepam-D7 ISTD	2.885	14006	48378	0.2895	28.1026
zopiclone	Oxazepam D5 ISTD	3.222	45893	108750	0.4220	24.4218
zolpidem	Oxazepam D5 ISTD	4.583	136823	108750	1.2581	25.4444
Chlordiazepoxide	Nordiazepam-D5 ISTD	4.704	40148	31369	1.2799	24.0648
quetiapine	Oxazepam D5 ISTD	5.569	54146	108750	0.4979	28.5312
Midazolam	Clonazepam-D4 ISTD	5.842	28542	81694	0.3494	25.1623
Flurazepam	Diazepam-D5 ISTD	6.128	126908	73590	1.7245	25.7313
Nitrazepam	Clonazepam-D4 ISTD	6.796	20088	81694	0.2459	21.9868
alpha-Hydroxyalprazolam	alphahydroxyalprazolam-D5 ISTD	7.053	3521	32150	0.1095	22.2442
alpha-hydroxytriazolam	Nordiazepam-D5 ISTD	7.110	4978	31369	0.1587	24.8859
Oxazepam	Oxazepam D5 ISTD	7.234	24774	108750	0.2278	23.7229
Nordiazepam	Nordiazepam-D5 ISTD	7.286	11630	31369	0.3708	22.5021
Clonazepam	Clonazepam-D4 ISTD	7.475	20455	81694	0.2504	24.8880
Lorazepam	Oxazepam D5 ISTD	7.575	6524	108750	0.0600	22.4597
Alprazolam	alphahydroxyalprazolam-D5 ISTD	7.688	10950	32150	0.3406	23.7540
Flunitrazepam	Clonazepam-D4 ISTD	7.964	30441	81694	0.3726	23.6772
Temazepam	Oxazepam D5 ISTD	8.279	48494	108750	0.4459	24.8639
Diazepam	Diazepam-D5 ISTD	8.848	20143	73590	0.2737	22.7229

ISP FORENSICS

Pocatello

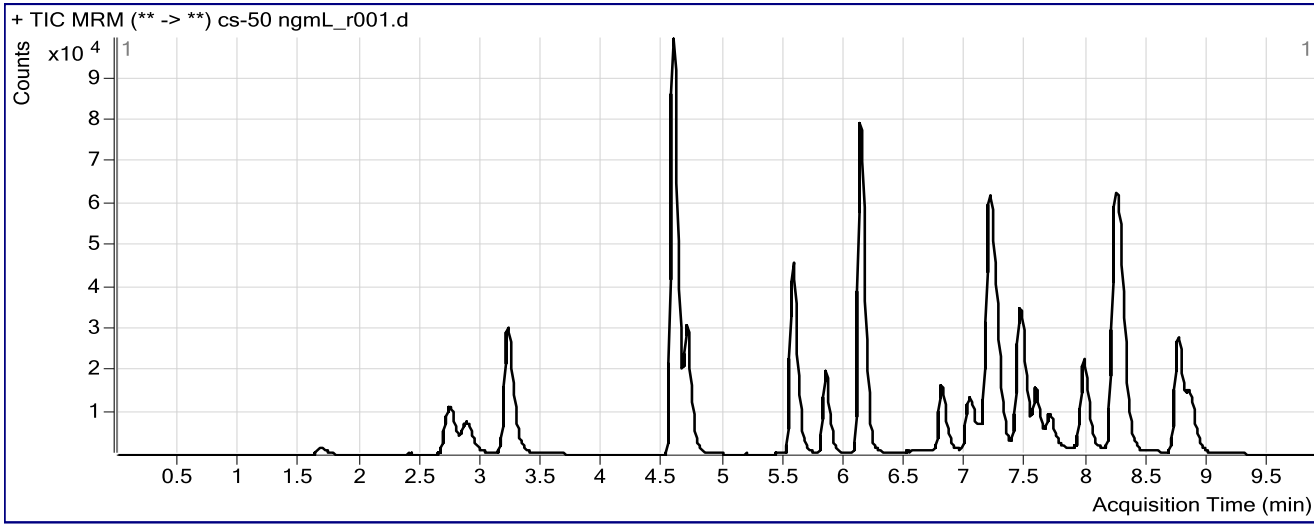
Benzodiazepine Analysis Report

Batch Data Path	C:\MassHunter\Data\COMBINED\10-30-15\103015 CS\BZ\QuantResults\103015-BZ-B-CS.batch.bin		
Analysis Time	11/5/2015 11:30 AM	Analyst Name	datastor
Report Time	11/5/2015 11:34 AM	Reporter Name	ISPUser
Last Calib Update	11/5/2015 11:30 AM	Batch State	Processed

Analysis Info

Acq Time	2015-10-31 17:35	Data File	cs-50 ngmL_r001.d
Sample Type	Calibration	Sample Name	50 ngmL
Dilution	1	Acq Method	Benzos_Z_Drugs_ACN_FA_ISP.m
Position	P2-F5	Sample Info	
Inj Vol	-1	Comment	AM 6.1.1 Benzo and Z by LCQQQ

Sample Chromatogram



Results

Compound	ISTD Compound	RT	Response	ISTD Resp	Resp Ratio	Final Conc
7-Aminoclonazepam	7-Aminoflunitrazepam-D7 ISTD	1.682	7432	60524	0.1228	46.6805
7-Aminoflunitrazepam	7-Aminoflunitrazepam-D7 ISTD	2.877	34232	60524	0.5656	55.9224
zopiclone	Oxazepam D5 ISTD	3.214	106111	114170	0.9294	52.4741
zolpidem	Oxazepam D5 ISTD	4.583	298528	114170	2.6148	52.4157
Chlordiazepoxide	Nordiazepam-D5 ISTD	4.696	90606	32563	2.7825	50.8915
quetiapine	Oxazepam D5 ISTD	5.569	113011	114170	0.9899	57.0220
Midazolam	Clonazepam-D4 ISTD	5.842	64888	88773	0.7309	52.5144
Flurazepam	Diazepam-D5 ISTD	6.120	269357	76993	3.4984	52.7364
Nitrazepam	Clonazepam-D4 ISTD	6.796	46118	88773	0.5195	45.2377
alpha-Hydroxyalprazolam	alphahydroxyalprazolam-D5 ISTD	7.053	8755	33810	0.2590	51.7633
alpha-hydroxytriazolam	Nordiazepam-D5 ISTD	7.110	11092	32563	0.3406	52.7505
Oxazepam	Oxazepam D5 ISTD	7.234	57790	114170	0.5062	51.8066
Nordiazepam	Nordiazepam-D5 ISTD	7.277	28202	32563	0.8661	51.4244
Clonazepam	Clonazepam-D4 ISTD	7.467	44840	88773	0.5051	48.8732
Lorazepam	Oxazepam D5 ISTD	7.567	15105	114170	0.1323	47.9592
Alprazolam	alphahydroxyalprazolam-D5 ISTD	7.688	27262	33810	0.8063	55.8832
Flunitrazepam	Clonazepam-D4 ISTD	7.964	73443	88773	0.8273	51.4787
Temazepam	Oxazepam D5 ISTD	8.279	113270	114170	0.9921	54.7169
Diazepam	Diazepam-D5 ISTD	8.848	47257	76993	0.6138	48.4218

ISP FORENSICS

Pocatello

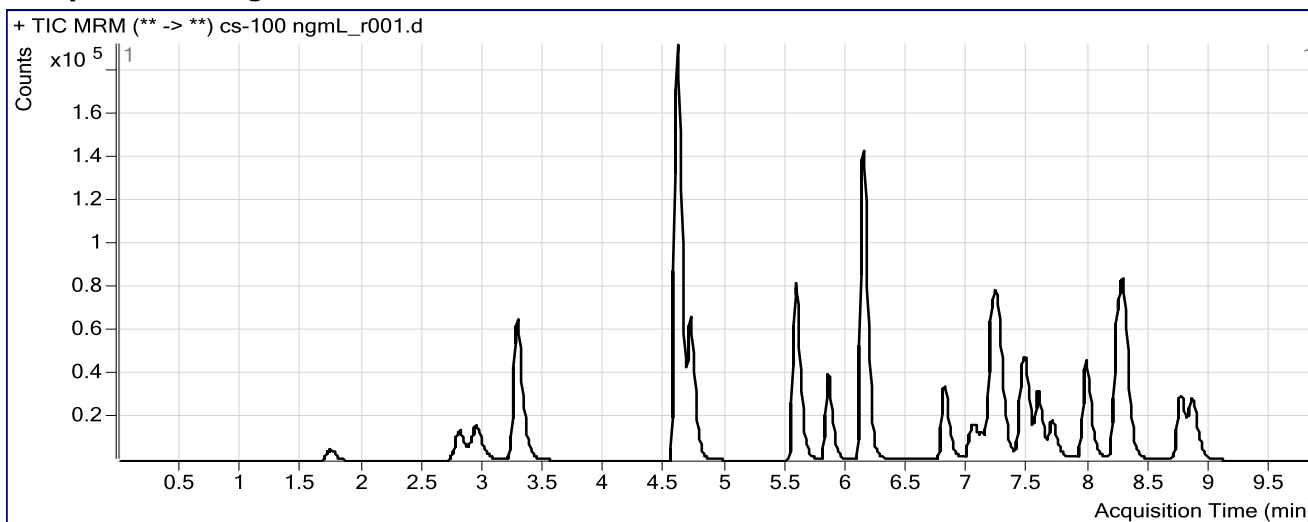
Benzodiazepine Analysis Report

Batch Data Path	C:\MassHunter\Data\COMBINED\10-30-15\103015 CS\BZ\QuantResults\103015-BZ-B-CS.batch.bin		
Analysis Time	11/5/2015 11:30 AM	Analyst Name	datastor
Report Time	11/5/2015 11:34 AM	Reporter Name	ISPUser
Last Calib Update	11/5/2015 11:30 AM	Batch State	Processed

Analysis Info

Acq Time	2015-10-31 17:50	Data File	cs-100 ngmL_r001.d
Sample Type	Calibration	Sample Name	100 ngmL
Dilution	1	Acq Method	Benzos_Z_Drugs_ACN_FA_ISP.m
Position	P2-F4	Sample Info	
Inj Vol	-1	Comment	AM 6.1.1 Benzo and Z by LCQQQ

Sample Chromatogram



Results

Compound	ISTD Compound	RT	Response	ISTD Resp	Resp Ratio	Final Conc
7-Aminoclonazepam	7-Aminoflunitrazepam-D7 ISTD	1.740	20459	72364	0.2827	106.0384
7-Aminoflunitrazepam	7-Aminoflunitrazepam-D7 ISTD	2.944	74697	72364	1.0322	103.1927
zopiclone	Oxazepam D5 ISTD	3.272	220360	120853	1.8234	102.4068
zolpidem	Oxazepam D5 ISTD	4.591	583692	120853	4.8298	97.2706
Chlordiazepoxide	Nordiazepam-D5 ISTD	4.713	192456	35351	5.4441	98.4963
quetiapine	Oxazepam D5 ISTD	5.569	204030	120853	1.6883	97.4686
Midazolam	Clonazepam-D4 ISTD	5.842	125091	92245	1.3561	98.2117
Flurazepam	Diazepam-D5 ISTD	6.128	497000	82518	6.0230	93.0918
Nitrazepam	Clonazepam-D4 ISTD	6.804	105277	92245	1.1413	98.2250
alpha-Hydroxyalprazolam	alphahydroxyalprazolam-D5 ISTD	7.061	18444	36842	0.5006	99.5643
alpha-hydroxytriazolam	Nordiazepam-D5 ISTD	7.119	23111	35351	0.6538	100.8835
Oxazepam	Oxazepam D5 ISTD	7.234	121070	120853	1.0018	102.0238
Nordiazepam	Nordiazepam-D5 ISTD	7.277	56405	35351	1.5955	94.1887
Clonazepam	Clonazepam-D4 ISTD	7.475	96352	92245	1.0445	99.8898
Lorazepam	Oxazepam D5 ISTD	7.575	32096	120853	0.2656	95.1362
Alprazolam	alphahydroxyalprazolam-D5 ISTD	7.688	48020	36842	1.3034	90.2581
Flunitrazepam	Clonazepam-D4 ISTD	7.964	152623	92245	1.6545	102.2913
Temazepam	Oxazepam D5 ISTD	8.288	219382	120853	1.8153	99.7791
Diazepam	Diazepam-D5 ISTD	8.848	98166	82518	1.1896	92.2679

ISP FORENSICS

Pocatello

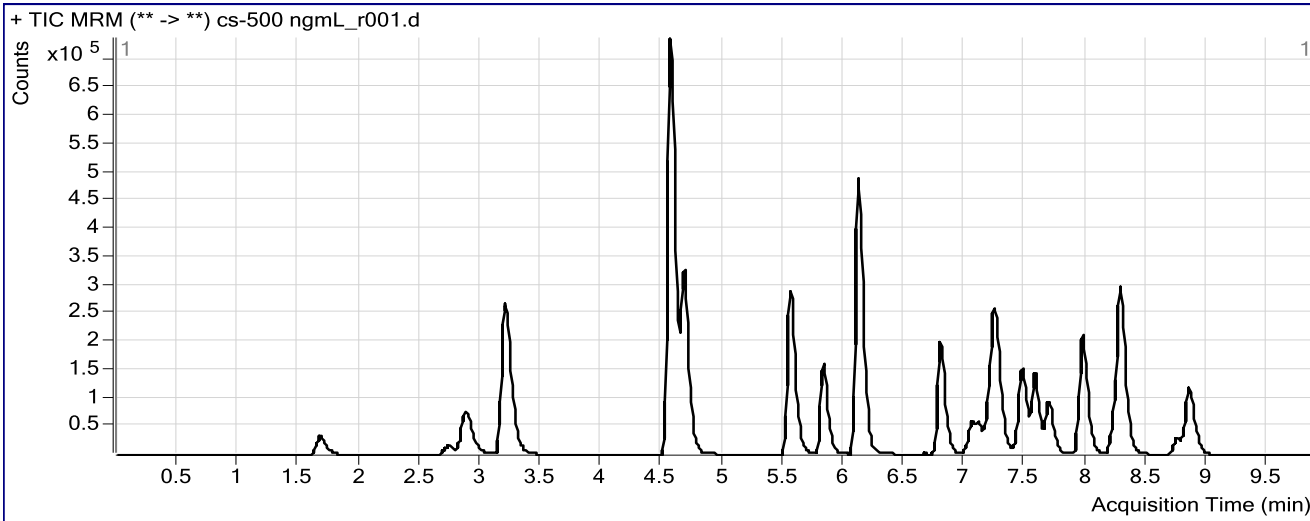
Benzodiazepine Analysis Report

Batch Data Path	C:\MassHunter\Data\COMBINED\10-30-15\103015 CS\BZ\QuantResults\103015-BZ-B-CS.batch.bin		
Analysis Time	11/5/2015 11:30 AM	Analyst Name	datastor
Report Time	11/5/2015 11:34 AM	Reporter Name	ISPUser
Last Calib Update	11/5/2015 11:30 AM	Batch State	Processed

Analysis Info

Acq Time	2015-10-31 18:05	Data File	cs-500 ngmL_r001.d
Sample Type	Calibration	Sample Name	500 ngmL
Dilution	1	Acq Method	Benzos_Z_Drugs_ACN_FA_ISP.m
Position	P2-F3	Sample Info	
Inj Vol	-1	Comment	AM 6.1.1 Benzo and Z by LCQQQ

Sample Chromatogram



Results

Compound	ISTD Compound	RT	Response	ISTD Resp	Resp Ratio	Final Conc
7-Aminoclonazepam	7-Aminoflunitrazepam-D7 ISTD	1.682	138190	81726	1.6909	542.1162
7-Aminoflunitrazepam	7-Aminoflunitrazepam-D7 ISTD	2.877	393541	81726	4.8154	498.8535
zopiclone	Oxazepam D5 ISTD	3.197	1004139	118111	8.5016	498.7951
zolpidem	Oxazepam D5 ISTD	4.566	2448509	118111	20.7305	456.8615
Chlordiazepoxide	Nordiazepam-D5 ISTD	4.679	1007585	35058	28.7408	519.9948
quetiapine	Oxazepam D5 ISTD	5.552	922328	118111	7.8090	451.9378
Midazolam	Clonazepam-D4 ISTD	5.823	539809	91765	5.8825	471.4343
Flurazepam	Diazepam-D5 ISTD	6.112	1808602	77864	23.2276	509.4701
Nitrazepam	Clonazepam-D4 ISTD	6.796	599396	91765	6.5319	566.8219
alpha-Hydroxyalprazolam	alphahydroxyalprazolam-D5 ISTD	7.053	110132	42849	2.5702	512.1657
alpha-hydroxytriazolam	Nordiazepam-D5 ISTD	7.110	112186	35058	3.2000	500.7980
Oxazepam	Oxazepam D5 ISTD	7.234	576723	118111	4.8829	505.3227
Nordiazepam	Nordiazepam-D5 ISTD	7.277	299743	35058	8.5500	512.5709
Clonazepam	Clonazepam-D4 ISTD	7.467	481031	91765	5.2420	507.7841
Lorazepam	Oxazepam D5 ISTD	7.567	161852	118111	1.3703	495.5909
Alprazolam	alphahydroxyalprazolam-D5 ISTD	7.688	300401	42849	7.0107	491.5190
Flunitrazepam	Clonazepam-D4 ISTD	7.964	727834	91765	7.9315	498.2043
Temazepam	Oxazepam D5 ISTD	8.279	1055031	118111	8.9325	493.0486
Diazepam	Diazepam-D5 ISTD	8.848	458248	77864	5.8852	466.7831

ISP FORENSICS

Pocatello

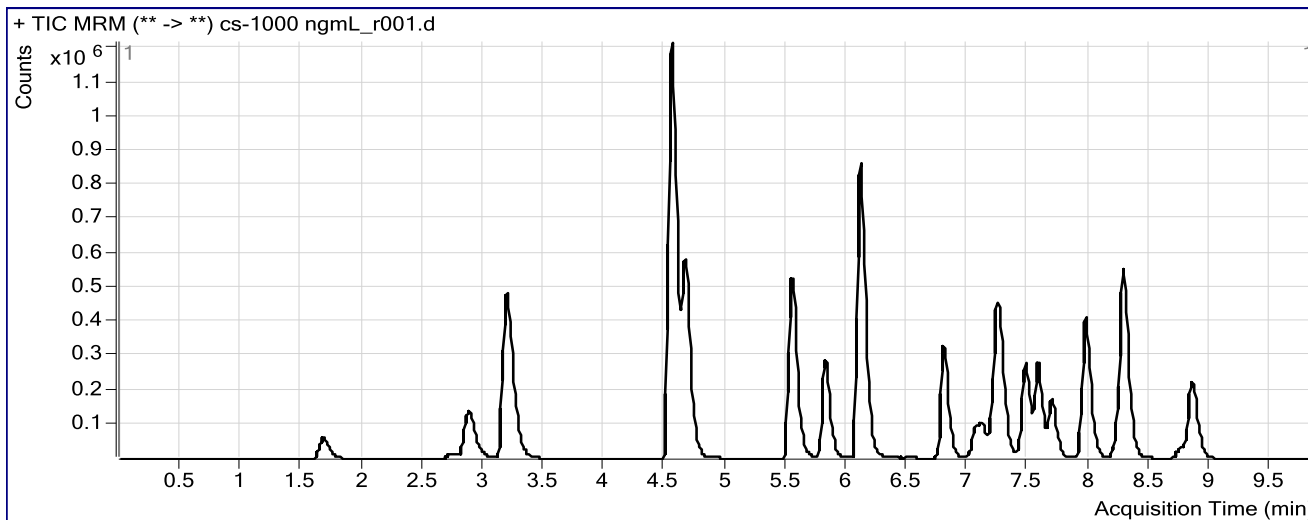
Benzodiazepine Analysis Report

Batch Data Path	C:\MassHunter\Data\COMBINED\10-30-15\103015 CS\BZ\QuantResults\103015-BZ-B-CS.batch.bin		
Analysis Time	11/5/2015 11:30 AM	Analyst Name	datastor
Report Time	11/5/2015 11:34 AM	Reporter Name	ISPUser
Last Calib Update	11/5/2015 11:30 AM	Batch State	Processed

Analysis Info

Acq Time	2015-10-31 18:19	Data File	cs-1000 ngmL_r001.d
Sample Type	Calibration	Sample Name	1000 ngmL
Dilution	1	Acq Method	Benzos_Z_Drugs_ACN_FA_ISP.m
Position	P2-F2	Sample Info	
Inj Vol	-1	Comment	AM 6.1.1 Benzo and Z by LCQQQ

Sample Chromatogram



Results

Compound	ISTD Compound	RT	Response	ISTD Resp	Resp Ratio	Final Conc
7-Aminoclonazepam	7-Aminoflunitrazepam-D7 ISTD	1.682	270791	78353	3.4560	966.6034
7-Aminoflunitrazepam	7-Aminoflunitrazepam-D7 ISTD	2.877	717263	78353	9.1542	983.8987
zopiclone	Oxazepam D5 ISTD	3.189	1680437	114881	14.6276	908.8249
zolpidem	Oxazepam D5 ISTD	4.550	4614236	114881	40.1653	1067.3294
Chlordiazepoxide	Nordiazepam-D5 ISTD	4.671	1966587	34597	56.8426	1040.5218
quetiapine	Oxazepam D5 ISTD	5.535	1769216	114881	15.4004	891.5800
Midazolam	Clonazepam-D4 ISTD	5.815	1007675	93122	10.8211	1044.0610
Flurazepam	Diazepam-D5 ISTD	6.103	3583435	72639	49.3323	
Nitrazepam	Clonazepam-D4 ISTD	6.796	981566	93122	10.5407	926.7651
alpha-Hydroxyalprazolam	alphanhydroxyalprazolam-D5 ISTD	7.053	200569	38259	5.2425	1053.7721
alpha-hydroxytriazolam	Nordiazepam-D5 ISTD	7.110	214824	34597	6.2093	994.8792
Oxazepam	Oxazepam D5 ISTD	7.234	1068852	114881	9.3040	988.9413
Nordiazepam	Nordiazepam-D5 ISTD	7.277	558232	34597	16.1352	993.4941
Clonazepam	Clonazepam-D4 ISTD	7.467	927097	93122	9.9558	991.6934
Lorazepam	Oxazepam D5 ISTD	7.575	315002	114881	2.7420	1018.6979
Alprazolam	alphanhydroxyalprazolam-D5 ISTD	7.688	574593	38259	15.0187	1076.5726
Flunitrazepam	Clonazepam-D4 ISTD	7.964	1437089	93122	15.4324	998.2318
Temazepam	Oxazepam D5 ISTD	8.279	2066366	114881	17.9870	1003.2243
Diazepam	Diazepam-D5 ISTD	8.848	913493	72639	12.5758	1066.8681

ISP FORENSICS

Pocatello

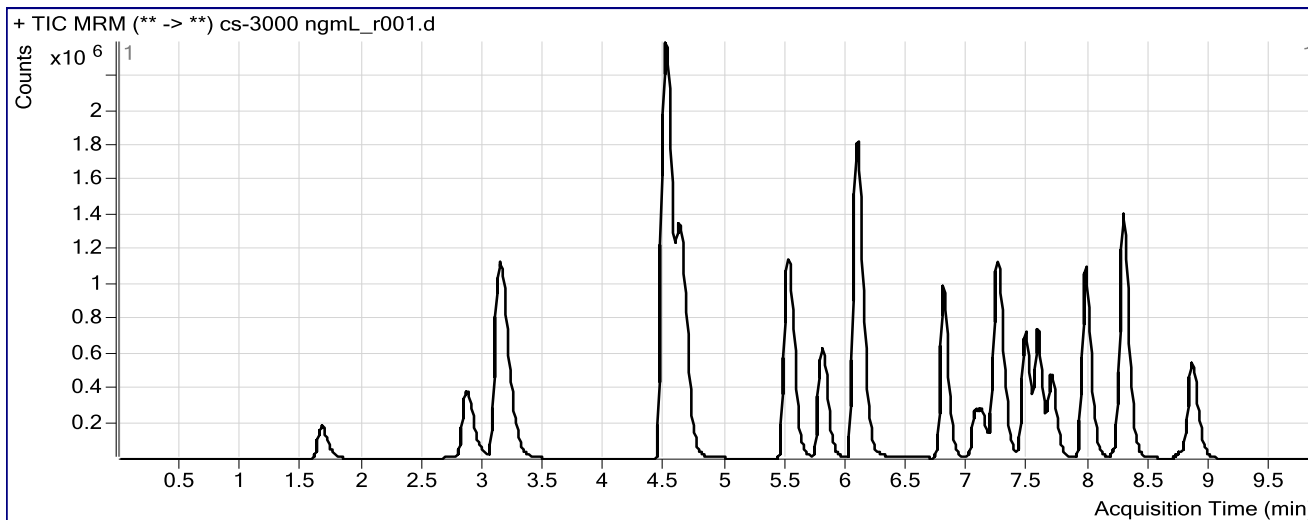
Benzodiazepine Analysis Report

Batch Data Path	C:\MassHunter\Data\COMBINED\10-30-15\103015 CS\BZ\QuantResults\103015-BZ-B-CS.batch.bin		
Analysis Time	11/5/2015 11:30 AM	Analyst Name	datastor
Report Time	11/5/2015 11:34 AM	Reporter Name	ISPUser
Last Calib Update	11/5/2015 11:30 AM	Batch State	Processed

Analysis Info

Acq Time	2015-10-31 18:34	Data File	cs-3000 ngmL_r001.d
Sample Type	Calibration	Sample Name	3000 ngmL
Dilution	1	Acq Method	Benzos_Z_Drugs_ACN_FA_ISP.m
Position	P2-F1	Sample Info	
Inj Vol	-1	Comment	AM 6.1.1 Benzo and Z by LCQQQ

Sample Chromatogram



Results

Compound	ISTD Compound	RT	Response	ISTD Resp	Resp Ratio	Final Conc
7-Aminoclonazepam	7-Aminoflunitrazepam-D7 ISTD	1.665	831730	87309	9.5262	2021.3097
7-Aminoflunitrazepam	7-Aminoflunitrazepam-D7 ISTD	2.867	2069753	87309	23.7060	3007.9020
zopiclone	Oxazepam D5 ISTD	3.130	4009781	115572	34.6950	3374.8441
zolpidem	Oxazepam D5 ISTD	4.500	8071436	115572	69.8389	
Chlordiazepoxide	Nordiazepam-D5 ISTD	4.629	5296649	34650	152.8612	2934.5123
quetiapine	Oxazepam D5 ISTD	5.510	3986228	115572	34.4912	1997.1863
Midazolam	Clonazepam-D4 ISTD	5.790	2001900	97525	20.5271	
Flurazepam	Diazepam-D5 ISTD	6.078	9107533	89069	102.2525	
Nitrazepam	Clonazepam-D4 ISTD	6.796	3076275	97525	31.5435	3015.6438
alpha-Hydroxyalprazolam	alphanhydroxyalprazolam-D5 ISTD	7.053	601298	42613	14.1106	2930.3785
alpha-hydroxytriazolam	Nordiazepam-D5 ISTD	7.110	584929	34650	16.8810	3001.8828
Oxazepam	Oxazepam D5 ISTD	7.225	2887879	115572	24.9877	3003.5124
Nordiazepam	Nordiazepam-D5 ISTD	7.277	1492282	34650	43.0672	3000.2090
Clonazepam	Clonazepam-D4 ISTD	7.467	2579280	97525	26.4474	3001.9159
Lorazepam	Oxazepam D5 ISTD	7.575	830939	115572	7.1898	2993.2157
Alprazolam	alphanhydroxyalprazolam-D5 ISTD	7.688	1614675	42613	37.8915	2926.4152
Flunitrazepam	Clonazepam-D4 ISTD	7.964	3969393	97525	40.7013	3001.0944
Temazepam	Oxazepam D5 ISTD	8.279	5950537	115572	51.4876	3000.0425
Diazepam	Diazepam-D5 ISTD	8.848	2404179	89069	26.9923	2966.6066

ISP FORENSICS

Pocatello

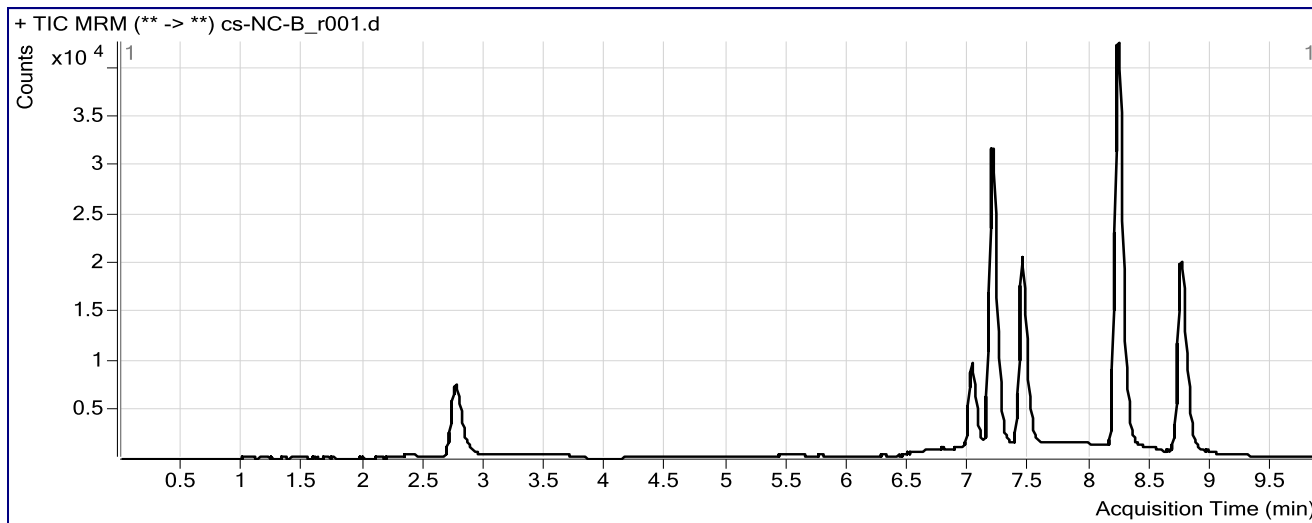
Benzodiazepine Analysis Report

Batch Data Path	C:\MassHunter\Data\COMBINED\10-30-15\103015 CS\BZ\QuantResults\103015-BZ-B-CS.batch.bi		
Analysis Time	11/5/2015 11:30 AM	Analyst Name	datastor
Report Time	11/5/2015 11:34 AM	Reporter Name	ISPUser
Last Calib Update	11/5/2015 11:30 AM	Batch State	Processed

Analysis Info

Acq Time	2015-10-31 19:03	Data File	cs-NC-B_r001.d
Sample Type	Sample	Sample Name	Negative Blood Control
Dilution	1	Acq Method	Benzos_Z_Drugs_ACN_FA_ISP.m
Position	P2-E9	Sample Info	UTAK Negative Whole Blood LOT B0689
Inj Vol	-1	Comment	AM 6.1.1 Benzo and Z by LCQQQ

Sample Chromatogram



ISP FORENSICS

Pocatello

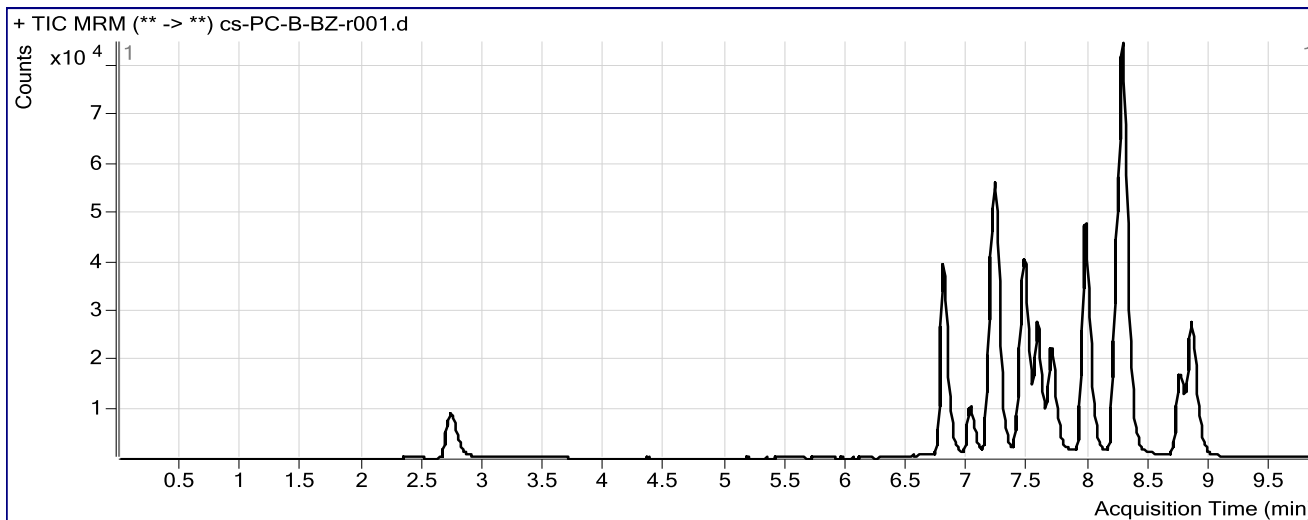
Benzodiazepine Analysis Report

Batch Data Path	C:\MassHunter\Data\COMBINED\10-30-15\103015 CS\BZ\QuantResults\103015-BZ-B-CS.batch.bin		
Analysis Time	11/5/2015 11:30 AM	Analyst Name	datastor
Report Time	11/5/2015 11:34 AM	Reporter Name	ISPUser
Last Calib Update	11/5/2015 11:30 AM	Batch State	Processed

Analysis Info

Acq Time	2015-10-31 19:18	Data File	cs-PC-B-BZ-r001.d
Sample Type	Sample	Sample Name	Positive Blood Control
Dilution	1	Acq Method	Benzos_Z_Drugs_ACN_FA_ISP.m
Position	P2-E8	Sample Info	200 ng/mL Benzodiazepines Mix Cerilliant lot FE012413-02 in neg LOT B0
Inj Vol	-1	Comment	AM 6.1.1 Benzo and Z by LCQQQ

Sample Chromatogram



Results

Compound	ISTD Compound	RT	Response	ISTD Resp	Resp Ratio	Final Conc
quetiapine	Oxazepam D5 ISTD	5.569	561	65679	0.0085	0.1912
Nitrazepam	Clonazepam-D4 ISTD	6.796	115090	57148	2.0139	172.9483
Oxazepam	Oxazepam D5 ISTD	7.225	108883	65679	1.6578	168.9219
Clonazepam	Clonazepam-D4 ISTD	7.467	103700	57148	1.8146	173.2508
Lorazepam	Oxazepam D5 ISTD	7.567	26191	65679	0.3988	142.5182
Alprazolam	alphahydroxyalprazolam-D5 ISTD	7.688	69628	28309	2.4596	170.5596
Flunitrazepam	Clonazepam-D4 ISTD	7.964	159288	57148	2.7873	172.3647
Temazepam	Oxazepam D5 ISTD	8.279	275237	65679	4.1906	230.2968
Diazepam	Diazepam-D5 ISTD	8.840	98903	46210	2.1403	165.5833

ISP FORENSICS

Pocatello

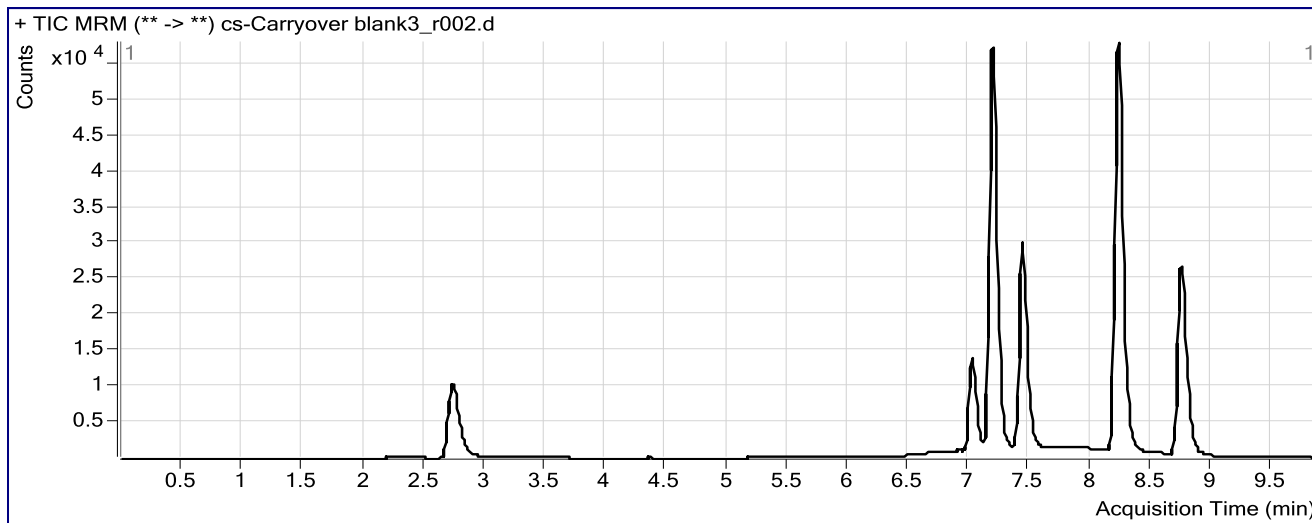
Benzodiazepine Analysis Report

Batch Data Path	C:\MassHunter\Data\COMBINED\10-30-15\103015 CS\BZ\QuantResults\103015-BZ-B-CS.batch.bi		
Analysis Time	11/5/2015 11:30 AM	Analyst Name	datastor
Report Time	11/5/2015 11:34 AM	Reporter Name	ISPUser
Last Calib Update	11/5/2015 11:30 AM	Batch State	Processed

Analysis Info

Acq Time	2015-11-01 01:24	Data File	cs-Carryover blank3_r002.d
Sample Type	Blank	Sample Name	Blank
Dilution	1	Acq Method	Benzos_Z_Drugs_ACN_FA_ISP.m
Position	P2-F9	Sample Info	
Inj Vol	-1	Comment	AM 6.1.1 Benzo and Z by LCQQQ

Sample Chromatogram

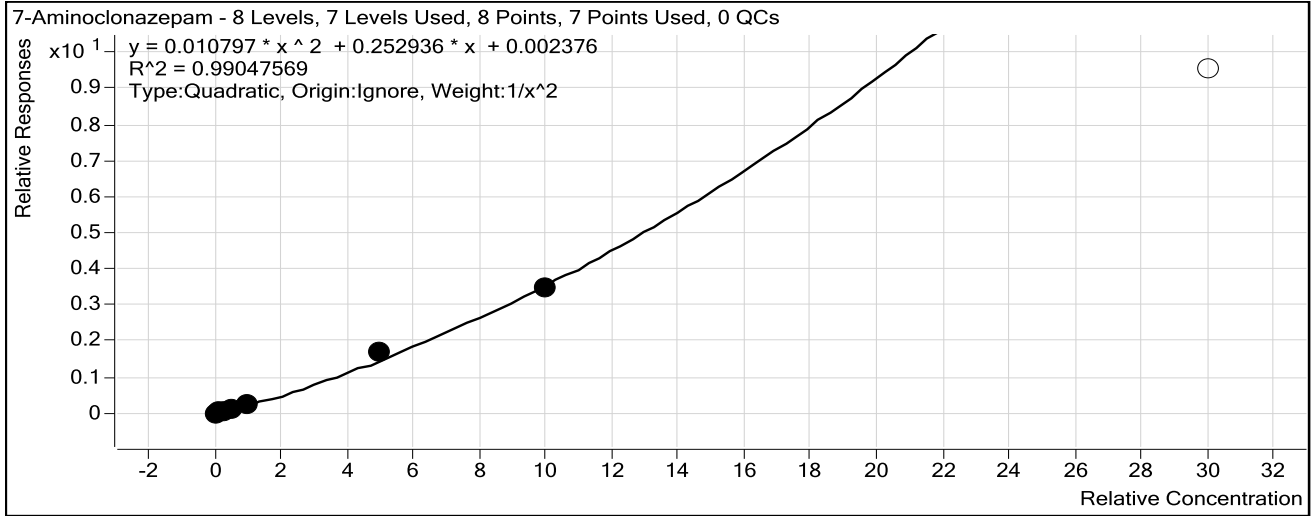


ISP Forensics Calibration Curve Report

Batch Data Path C:\MassHunter\Data\COMBINED\10-30-15\103015 CS\BZ\QuantResults\103015-BZ-B-
CS.batch.bin

Last Calib Update 11/5/2015 11:30 AM **Analyst Name** ISP TOX

Target Compound 7-Aminoclonazepam
Internal Standard 7-Aminoflunitrazepam-D7 ISTD



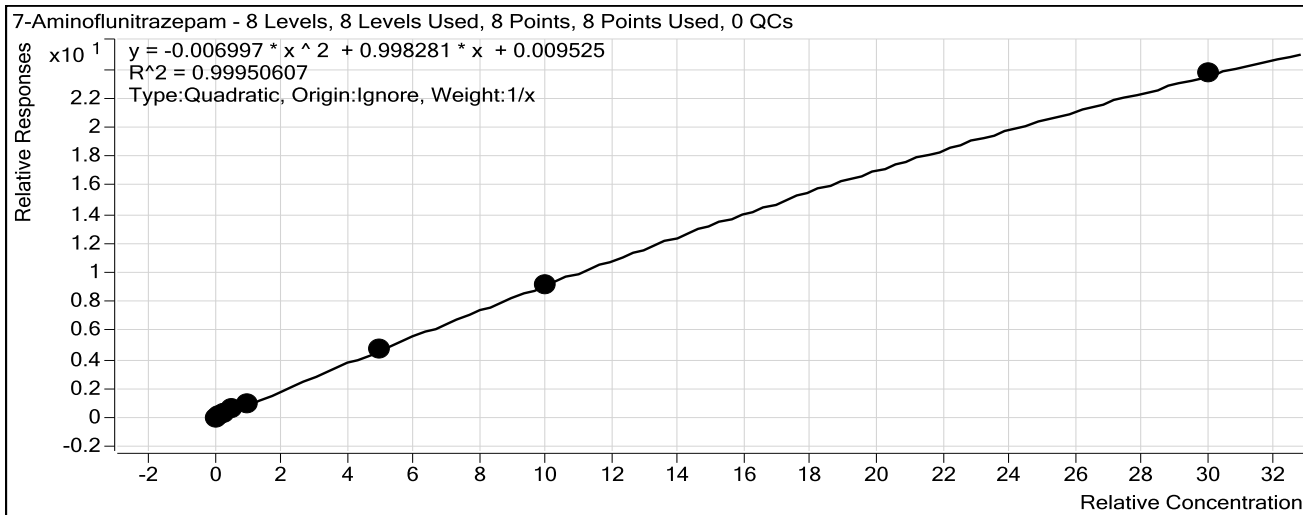
Sample	Level	Enabled	Exp Conc	Final Conc	Accuracy
5 ng/mL	1	<input checked="" type="checkbox"/>	5	4.9	98.0
10 ng/mL	2	<input checked="" type="checkbox"/>	10	11.0	110.0
25 ng/mL	3	<input checked="" type="checkbox"/>	25	21.6	86.5
50 ng/mL	4	<input checked="" type="checkbox"/>	50	46.7	93.4
100 ng/mL	5	<input checked="" type="checkbox"/>	100	106.0	106.0
500 ng/mL	6	<input checked="" type="checkbox"/>	500	542.1	108.4
1000 ng/mL	7	<input checked="" type="checkbox"/>	1000	966.6	96.7
3000 ng/mL	8	<input type="checkbox"/>	3000	2021.3	67.4

ISP Forensics Calibration Curve Report

Batch Data Path C:\MassHunter\Data\COMBINED\10-30-15\103015 CS\BZ\QuantResults\103015-BZ-B-
CS.batch.bin

Last Calib Update 11/5/2015 11:30 AM **Analyst Name** ISP TOX

Target Compound 7-Aminoflunitrazepam
Internal Standard 7-Aminoflunitrazepam-D7 ISTD



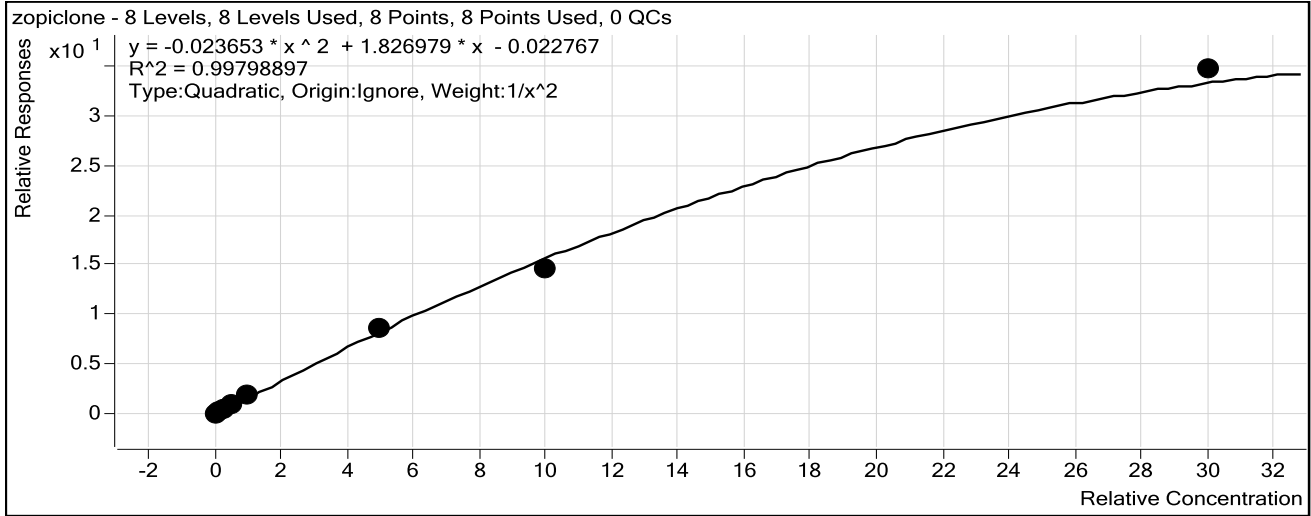
Sample	Level	Enabled	Exp Conc	Final Conc	Accuracy
5 ng/mL	1	<input checked="" type="checkbox"/>	5	4.2	83.6
10 ng/mL	2	<input checked="" type="checkbox"/>	10	9.1	90.6
25 ng/mL	3	<input checked="" type="checkbox"/>	25	28.1	112.4
50 ng/mL	4	<input checked="" type="checkbox"/>	50	55.9	111.8
100 ng/mL	5	<input checked="" type="checkbox"/>	100	103.2	103.2
500 ng/mL	6	<input checked="" type="checkbox"/>	500	498.9	99.8
1000 ng/mL	7	<input checked="" type="checkbox"/>	1000	983.9	98.4
3000 ng/mL	8	<input checked="" type="checkbox"/>	3000	3007.9	100.3

ISP Forensics Calibration Curve Report

Batch Data Path C:\MassHunter\Data\COMBINED\10-30-15\103015 CS\BZ\QuantResults\103015-BZ-B-
CS.batch.bin

Last Calib Update 11/5/2015 11:30 AM **Analyst Name** ISP TOX

Target Compound *zopiclone*
Internal Standard *Oxazepam D5 ISTD*



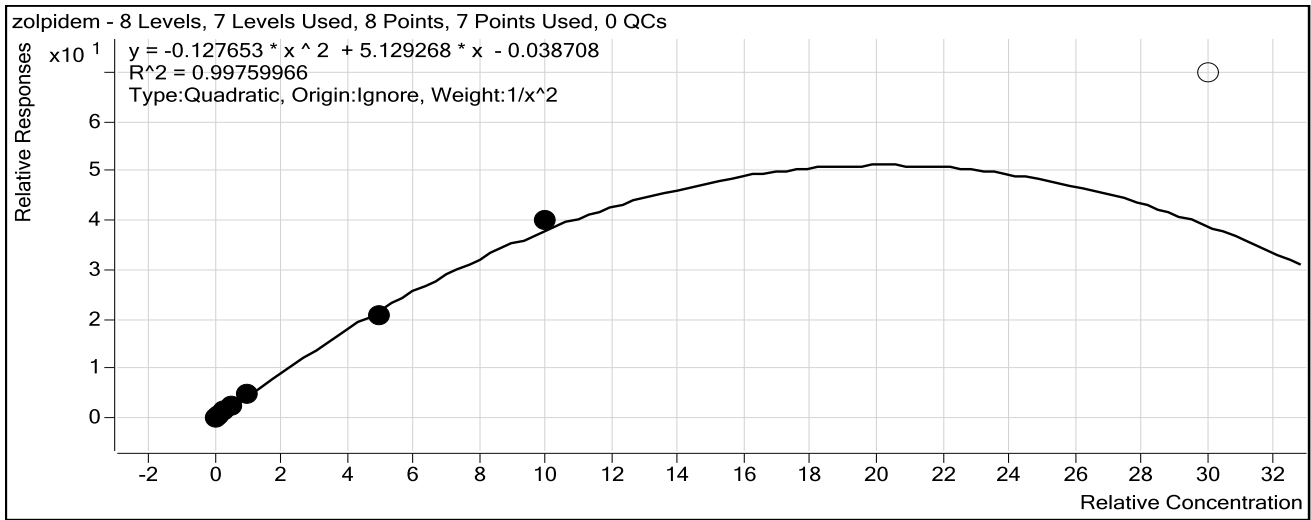
Sample	Level	Enabled	Exp Conc	Final Conc	Accuracy
5 ng/mL	1	<input checked="" type="checkbox"/>	5	5.0	99.8
10 ng/mL	2	<input checked="" type="checkbox"/>	10	10.0	100.2
25 ng/mL	3	<input checked="" type="checkbox"/>	25	24.4	97.7
50 ng/mL	4	<input checked="" type="checkbox"/>	50	52.5	104.9
100 ng/mL	5	<input checked="" type="checkbox"/>	100	102.4	102.4
500 ng/mL	6	<input checked="" type="checkbox"/>	500	498.8	99.8
1000 ng/mL	7	<input checked="" type="checkbox"/>	1000	908.8	90.9
3000 ng/mL	8	<input checked="" type="checkbox"/>	3000	3374.8	112.5

ISP Forensics Calibration Curve Report

Batch Data Path C:\MassHunter\Data\COMBINED\10-30-15\103015 CS\BZ\QuantResults\103015-BZ-B-
CS.batch.bin

Last Calib Update 11/5/2015 11:30 AM **Analyst Name** ISP TOX

Target Compound zolpidem
Internal Standard Oxazepam D5 ISTD



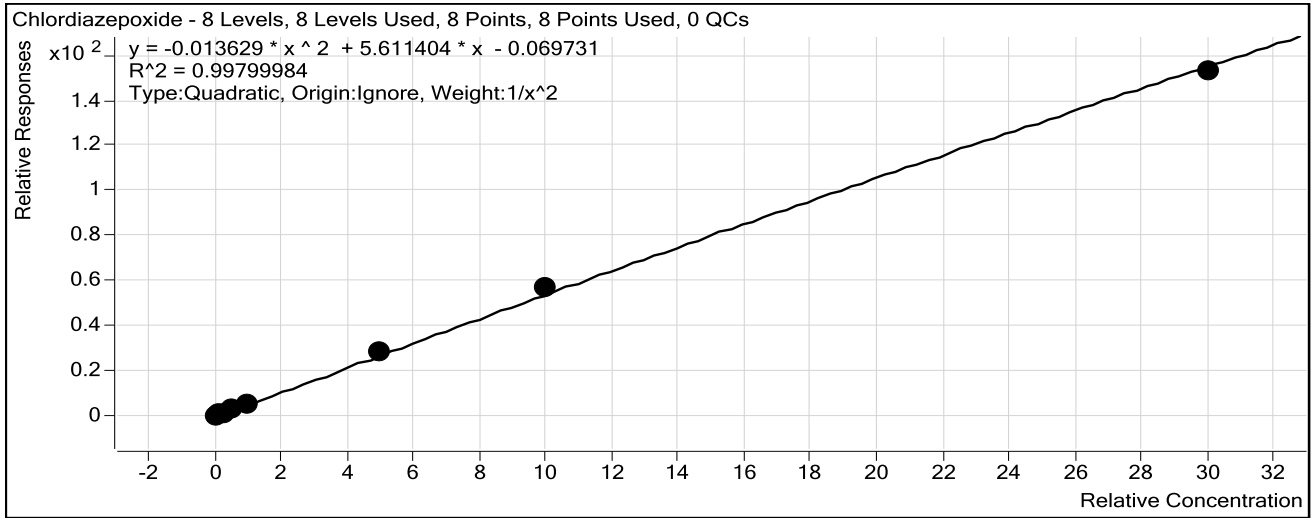
Sample	Level	Enabled	Exp Conc	Final Conc	Accuracy
5 ng/mL	1	<input checked="" type="checkbox"/>	5	5.0	99.3
10 ng/mL	2	<input checked="" type="checkbox"/>	10	10.0	100.2
25 ng/mL	3	<input checked="" type="checkbox"/>	25	25.4	101.8
50 ng/mL	4	<input checked="" type="checkbox"/>	50	52.4	104.8
100 ng/mL	5	<input checked="" type="checkbox"/>	100	97.3	97.3
500 ng/mL	6	<input checked="" type="checkbox"/>	500	456.9	91.4
1000 ng/mL	7	<input checked="" type="checkbox"/>	1000	1067.3	106.7
3000 ng/mL	8	<input type="checkbox"/>	3000	0.0	0.0

ISP Forensics Calibration Curve Report

Batch Data Path C:\MassHunter\Data\COMBINED\10-30-15\103015 CS\BZ\QuantResults\103015-BZ-B-
CS.batch.bin

Last Calib Update 11/5/2015 11:30 AM **Analyst Name** ISP TOX

Target Compound *Chlordiazepoxide*
Internal Standard *Nordiazepam-D5 ISTD*



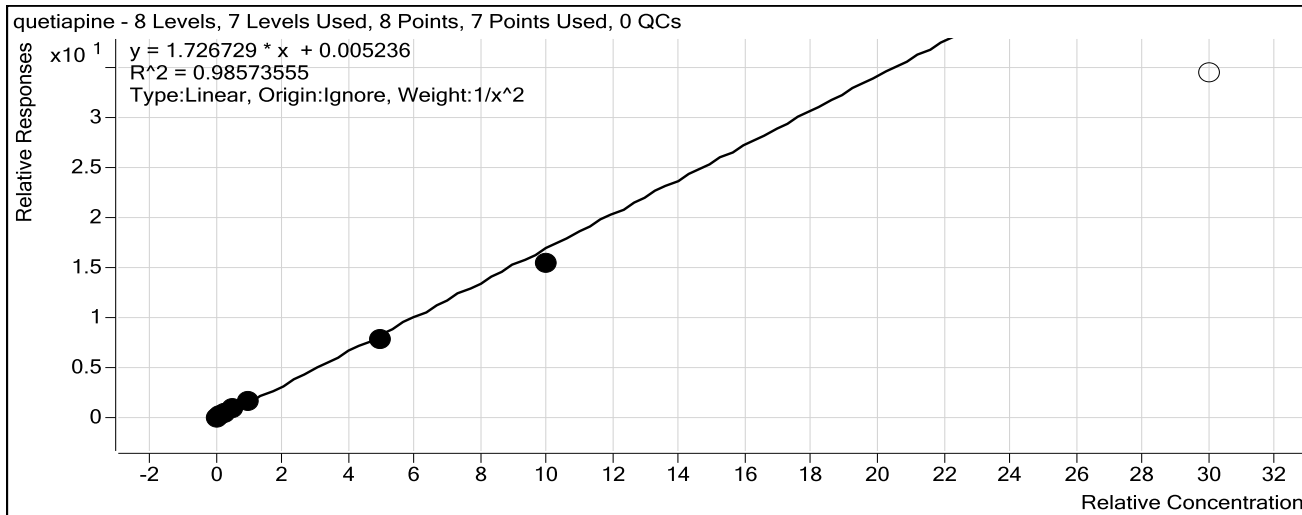
Sample	Level	Enabled	Exp Conc	Final Conc	Accuracy
5 ngmL	1	<input checked="" type="checkbox"/>	5	5.2	103.6
10 ngmL	2	<input checked="" type="checkbox"/>	10	9.4	94.0
25 ngmL	3	<input checked="" type="checkbox"/>	25	24.1	96.3
50 ngmL	4	<input checked="" type="checkbox"/>	50	50.9	101.8
100 ngmL	5	<input checked="" type="checkbox"/>	100	98.5	98.5
500 ngmL	6	<input checked="" type="checkbox"/>	500	520.0	104.0
1000 ngmL	7	<input checked="" type="checkbox"/>	1000	1040.5	104.1
3000 ngmL	8	<input checked="" type="checkbox"/>	3000	2934.5	97.8

ISP Forensics Calibration Curve Report

Batch Data Path C:\MassHunter\Data\COMBINED\10-30-15\103015 CS\BZ\QuantResults\103015-BZ-B-
CS.batch.bin

Last Calib Update 11/5/2015 11:30 AM **Analyst Name** ISP TOX

Target Compound *quetiapine*
Internal Standard *Oxazepam D5 ISTD*



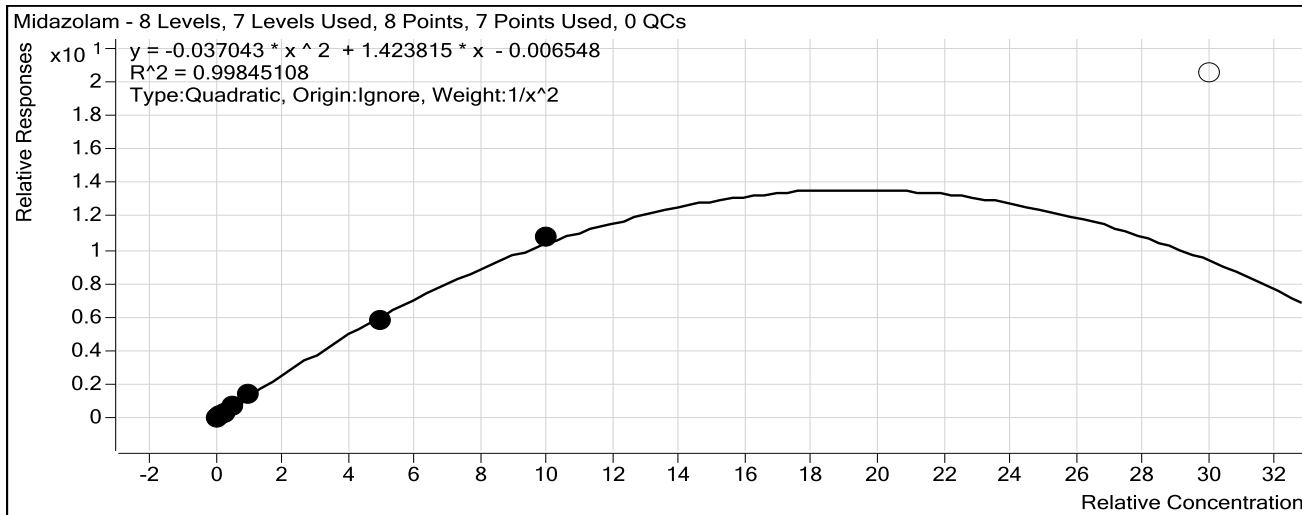
Sample	Level	Enabled	Exp Conc	Final Conc	Accuracy
5 ng/mL	1	<input checked="" type="checkbox"/>	5	4.9	97.3
10 ng/mL	2	<input checked="" type="checkbox"/>	10	9.8	97.5
25 ng/mL	3	<input checked="" type="checkbox"/>	25	28.5	114.1
50 ng/mL	4	<input checked="" type="checkbox"/>	50	57.0	114.0
100 ng/mL	5	<input checked="" type="checkbox"/>	100	97.5	97.5
500 ng/mL	6	<input checked="" type="checkbox"/>	500	451.9	90.4
1000 ng/mL	7	<input checked="" type="checkbox"/>	1000	891.6	89.2
3000 ng/mL	8	<input type="checkbox"/>	3000	1997.2	66.6

ISP Forensics Calibration Curve Report

Batch Data Path C:\MassHunter\Data\COMBINED\10-30-15\103015 CS\BZ\QuantResults\103015-BZ-B-
CS.batch.bin

Last Calib Update 11/5/2015 11:30 AM **Analyst Name** ISP TOX

Target Compound Midazolam
Internal Standard Clonazepam-D4 ISTD



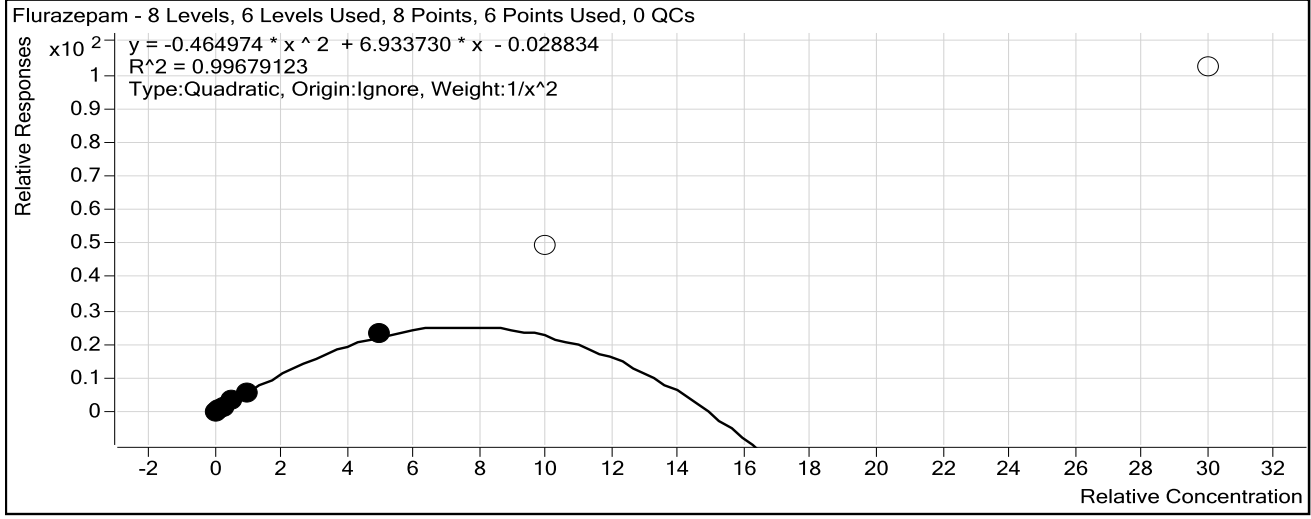
Sample	Level	Enabled	Exp Conc	Final Conc	Accuracy
5 ng/mL	1	<input checked="" type="checkbox"/>	5	5.0	100.6
10 ng/mL	2	<input checked="" type="checkbox"/>	10	9.8	97.7
25 ng/mL	3	<input checked="" type="checkbox"/>	25	25.2	100.6
50 ng/mL	4	<input checked="" type="checkbox"/>	50	52.5	105.0
100 ng/mL	5	<input checked="" type="checkbox"/>	100	98.2	98.2
500 ng/mL	6	<input checked="" type="checkbox"/>	500	471.4	94.3
1000 ng/mL	7	<input checked="" type="checkbox"/>	1000	1044.1	104.4
3000 ng/mL	8	<input type="checkbox"/>	3000	0.0	0.0

ISP Forensics Calibration Curve Report

Batch Data Path C:\MassHunter\Data\COMBINED\10-30-15\103015 CS\BZ\QuantResults\103015-BZ-B-
CS.batch.bin

Last Calib Update 11/5/2015 11:30 AM **Analyst Name** ISP TOX

Target Compound *Flurazepam*
Internal Standard *Diazepam-D5 ISTD*



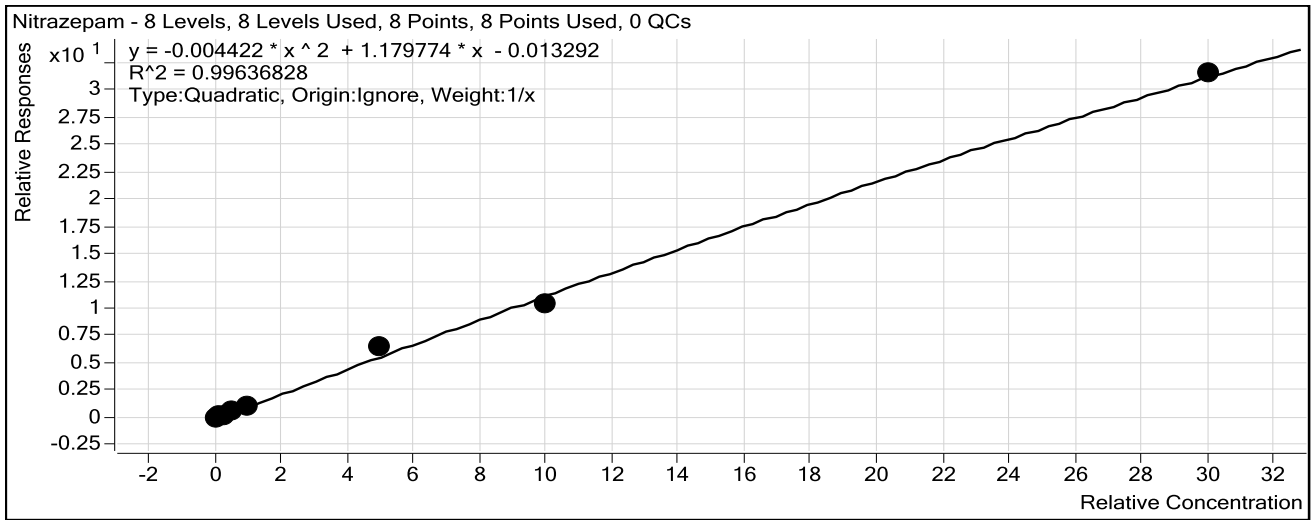
Sample	Level	Enabled	Exp Conc	Final Conc	Accuracy
5 ng/mL	1	<input checked="" type="checkbox"/>	5	5.0	101.0
10 ng/mL	2	<input checked="" type="checkbox"/>	10	9.6	96.5
25 ng/mL	3	<input checked="" type="checkbox"/>	25	25.7	102.9
50 ng/mL	4	<input checked="" type="checkbox"/>	50	52.7	105.5
100 ng/mL	5	<input checked="" type="checkbox"/>	100	93.1	93.1
500 ng/mL	6	<input checked="" type="checkbox"/>	500	509.5	101.9
1000 ng/mL	7	<input type="checkbox"/>	1000	0.0	0.0
3000 ng/mL	8	<input type="checkbox"/>	3000	0.0	0.0

ISP Forensics Calibration Curve Report

Batch Data Path C:\MassHunter\Data\COMBINED\10-30-15\103015 CS\BZ\QuantResults\103015-BZ-B-
CS.batch.bin

Last Calib Update 11/5/2015 11:30 AM **Analyst Name** ISP TOX

Target Compound Nitrazepam
Internal Standard Clonazepam-D4 ISTD



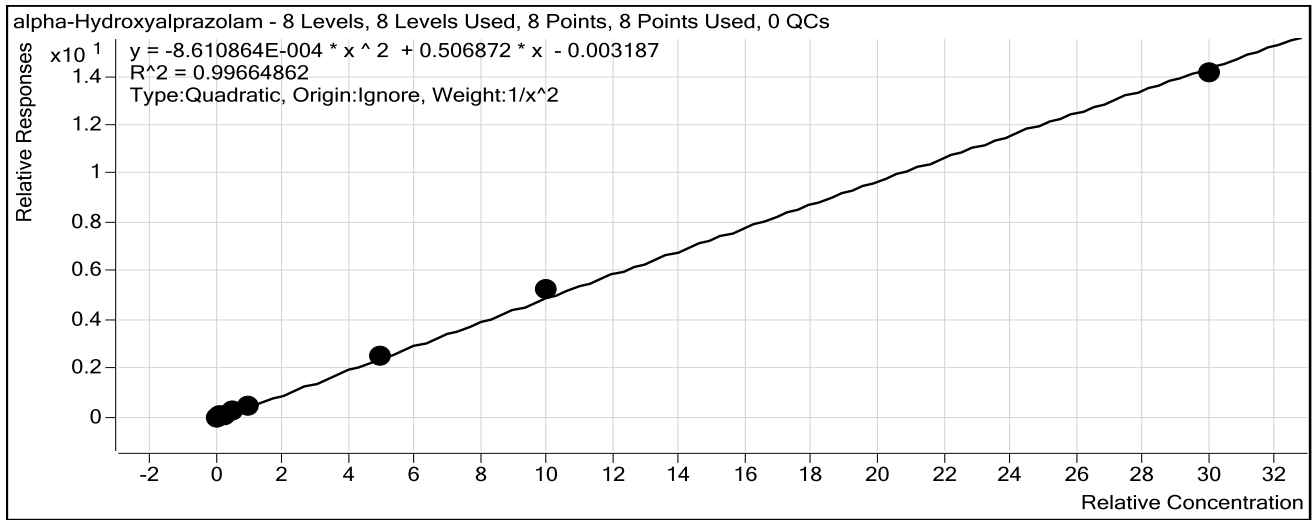
Sample	Level	Enabled	Exp Conc	Final Conc	Accuracy
5 ng/mL	1	<input checked="" type="checkbox"/>	5	5.5	109.8
10 ng/mL	2	<input checked="" type="checkbox"/>	10	10.7	107.0
25 ng/mL	3	<input checked="" type="checkbox"/>	25	22.0	87.9
50 ng/mL	4	<input checked="" type="checkbox"/>	50	45.2	90.5
100 ng/mL	5	<input checked="" type="checkbox"/>	100	98.2	98.2
500 ng/mL	6	<input checked="" type="checkbox"/>	500	566.8	113.4
1000 ng/mL	7	<input checked="" type="checkbox"/>	1000	926.8	92.7
3000 ng/mL	8	<input checked="" type="checkbox"/>	3000	3015.6	100.5

ISP Forensics Calibration Curve Report

Batch Data Path C:\MassHunter\Data\COMBINED\10-30-15\103015 CS\BZ\QuantResults\103015-BZ-B-
CS.batch.bin

Last Calib Update 11/5/2015 11:30 AM **Analyst Name** ISP TOX

Target Compound *alpha-Hydroxyalprazolam*
Internal Standard *alphahydroxyalprazolam-D5 ISTD*



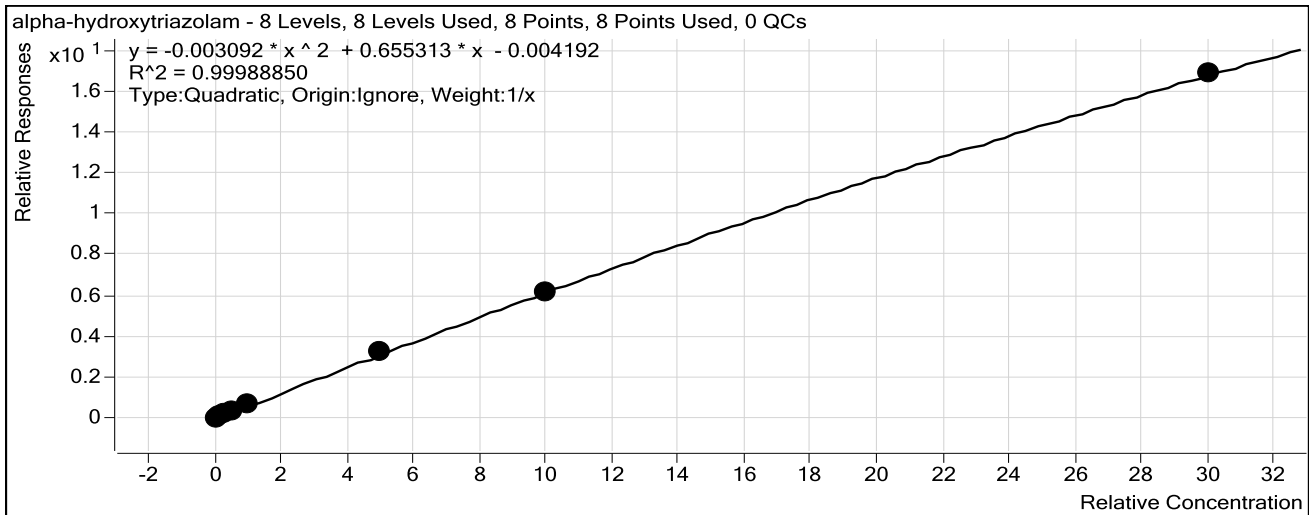
Sample	Level	Enabled	Exp Conc	Final Conc	Accuracy
5 ng/mL	1	<input checked="" type="checkbox"/>	5	5.1	101.2
10 ng/mL	2	<input checked="" type="checkbox"/>	10	10.1	101.2
25 ng/mL	3	<input checked="" type="checkbox"/>	25	22.2	89.0
50 ng/mL	4	<input checked="" type="checkbox"/>	50	51.8	103.5
100 ng/mL	5	<input checked="" type="checkbox"/>	100	99.6	99.6
500 ng/mL	6	<input checked="" type="checkbox"/>	500	512.2	102.4
1000 ng/mL	7	<input checked="" type="checkbox"/>	1000	1053.8	105.4
3000 ng/mL	8	<input checked="" type="checkbox"/>	3000	2930.4	97.7

ISP Forensics Calibration Curve Report

Batch Data Path C:\MassHunter\Data\COMBINED\10-30-15\103015 CS\BZ\QuantResults\103015-BZ-B-
CS.batch.bin

Last Calib Update 11/5/2015 11:30 AM **Analyst Name** ISP TOX

Target Compound *alpha-hydroxytriazolam*
Internal Standard *Nordiazepam-D5 ISTD*



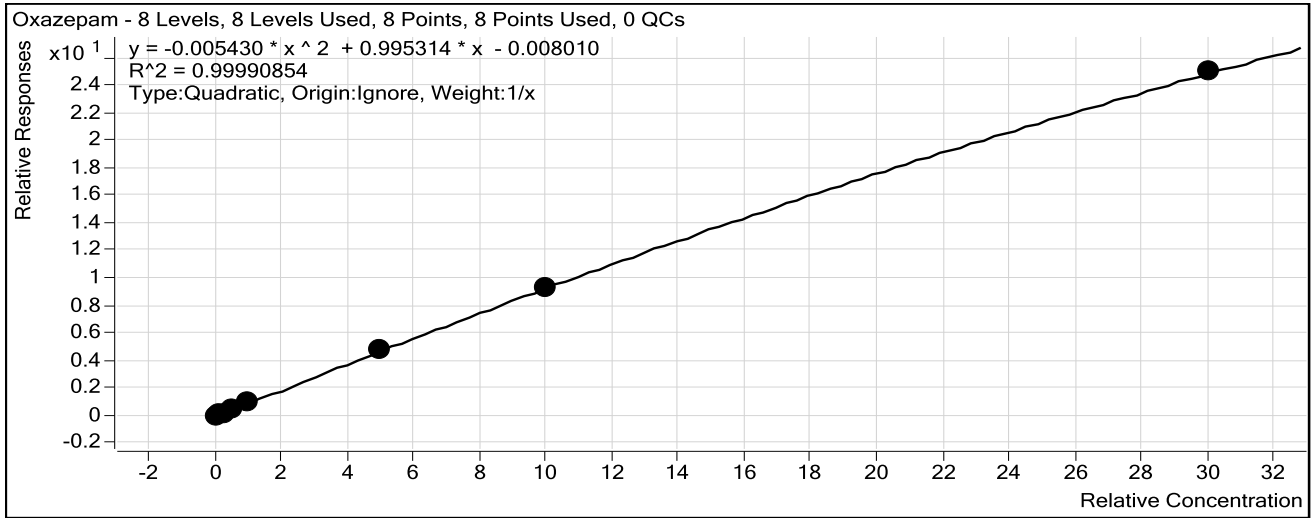
Sample	Level	Enabled	Exp Conc	Final Conc	Accuracy
5 ng/mL	1	<input checked="" type="checkbox"/>	5	5.4	108.1
10 ng/mL	2	<input checked="" type="checkbox"/>	10	8.6	86.2
25 ng/mL	3	<input checked="" type="checkbox"/>	25	24.9	99.5
50 ng/mL	4	<input checked="" type="checkbox"/>	50	52.8	105.5
100 ng/mL	5	<input checked="" type="checkbox"/>	100	100.9	100.9
500 ng/mL	6	<input checked="" type="checkbox"/>	500	500.8	100.2
1000 ng/mL	7	<input checked="" type="checkbox"/>	1000	994.9	99.5
3000 ng/mL	8	<input checked="" type="checkbox"/>	3000	3001.9	100.1

ISP Forensics Calibration Curve Report

Batch Data Path C:\MassHunter\Data\COMBINED\10-30-15\103015 CS\BZ\QuantResults\103015-BZ-B-
CS.batch.bin

Last Calib Update 11/5/2015 11:30 AM **Analyst Name** ISP TOX

Target Compound Oxazepam
Internal Standard Oxazepam D5 ISTD



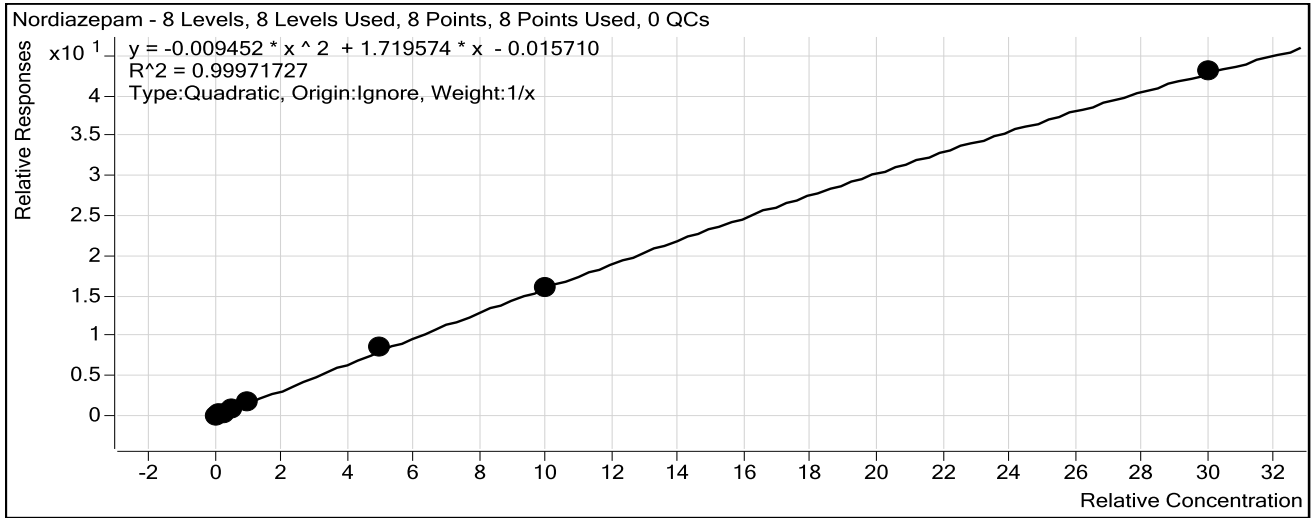
Sample	Level	Enabled	Exp Conc	Final Conc	Accuracy
5 ng/mL	1	<input checked="" type="checkbox"/>	5	5.0	100.0
10 ng/mL	2	<input checked="" type="checkbox"/>	10	9.9	99.4
25 ng/mL	3	<input checked="" type="checkbox"/>	25	23.7	94.9
50 ng/mL	4	<input checked="" type="checkbox"/>	50	51.8	103.6
100 ng/mL	5	<input checked="" type="checkbox"/>	100	102.0	102.0
500 ng/mL	6	<input checked="" type="checkbox"/>	500	505.3	101.1
1000 ng/mL	7	<input checked="" type="checkbox"/>	1000	988.9	98.9
3000 ng/mL	8	<input checked="" type="checkbox"/>	3000	3003.5	100.1

ISP Forensics Calibration Curve Report

Batch Data Path C:\MassHunter\Data\COMBINED\10-30-15\103015 CS\BZ\QuantResults\103015-BZ-B-
CS.batch.bin

Last Calib Update 11/5/2015 11:30 AM **Analyst Name** ISP TOX

Target Compound Nordiazepam
Internal Standard Nordiazepam-D5 ISTD



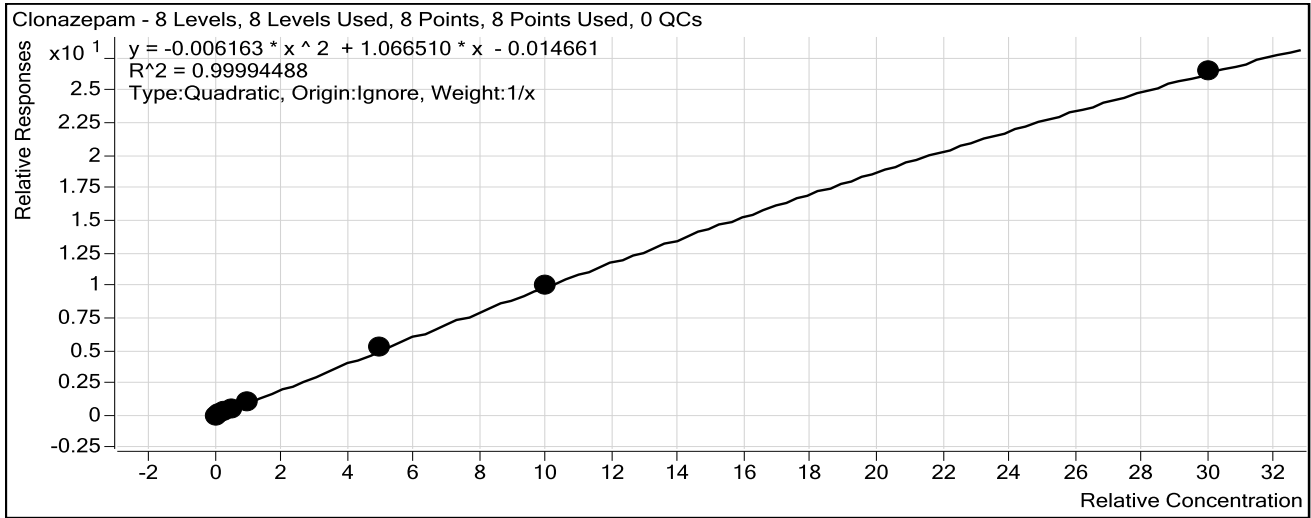
Sample	Level	Enabled	Exp Conc	Final Conc	Accuracy
5 ng/mL	1	<input checked="" type="checkbox"/>	5	5.5	110.1
10 ng/mL	2	<input checked="" type="checkbox"/>	10	10.1	101.0
25 ng/mL	3	<input checked="" type="checkbox"/>	25	22.5	90.0
50 ng/mL	4	<input checked="" type="checkbox"/>	50	51.4	102.8
100 ng/mL	5	<input checked="" type="checkbox"/>	100	94.2	94.2
500 ng/mL	6	<input checked="" type="checkbox"/>	500	512.6	102.5
1000 ng/mL	7	<input checked="" type="checkbox"/>	1000	993.5	99.3
3000 ng/mL	8	<input checked="" type="checkbox"/>	3000	3000.2	100.0

ISP Forensics Calibration Curve Report

Batch Data Path C:\MassHunter\Data\COMBINED\10-30-15\103015 CS\BZ\QuantResults\103015-BZ-B-
CS.batch.bin

Last Calib Update 11/5/2015 11:30 AM **Analyst Name** ISP TOX

Target Compound *Clonazepam*
Internal Standard *Clonazepam-D4 ISTD*



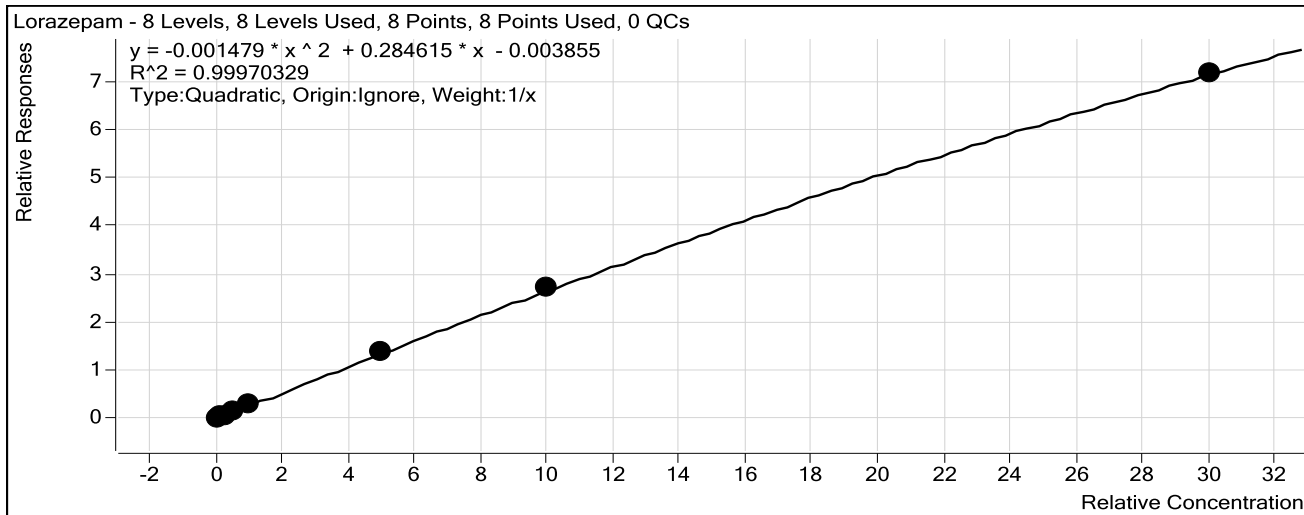
Sample	Level	Enabled	Exp Conc	Final Conc	Accuracy
5 ng/mL	1	<input checked="" type="checkbox"/>	5	5.1	101.9
10 ng/mL	2	<input checked="" type="checkbox"/>	10	10.0	100.2
25 ng/mL	3	<input checked="" type="checkbox"/>	25	24.9	99.6
50 ng/mL	4	<input checked="" type="checkbox"/>	50	48.9	97.7
100 ng/mL	5	<input checked="" type="checkbox"/>	100	99.9	99.9
500 ng/mL	6	<input checked="" type="checkbox"/>	500	507.8	101.6
1000 ng/mL	7	<input checked="" type="checkbox"/>	1000	991.7	99.2
3000 ng/mL	8	<input checked="" type="checkbox"/>	3000	3001.9	100.1

ISP Forensics Calibration Curve Report

Batch Data Path C:\MassHunter\Data\COMBINED\10-30-15\103015 CS\BZ\QuantResults\103015-BZ-B-
CS.batch.bin

Last Calib Update 11/5/2015 11:30 AM **Analyst Name** ISP TOX

Target Compound Lorazepam
Internal Standard Oxazepam D5 ISTD



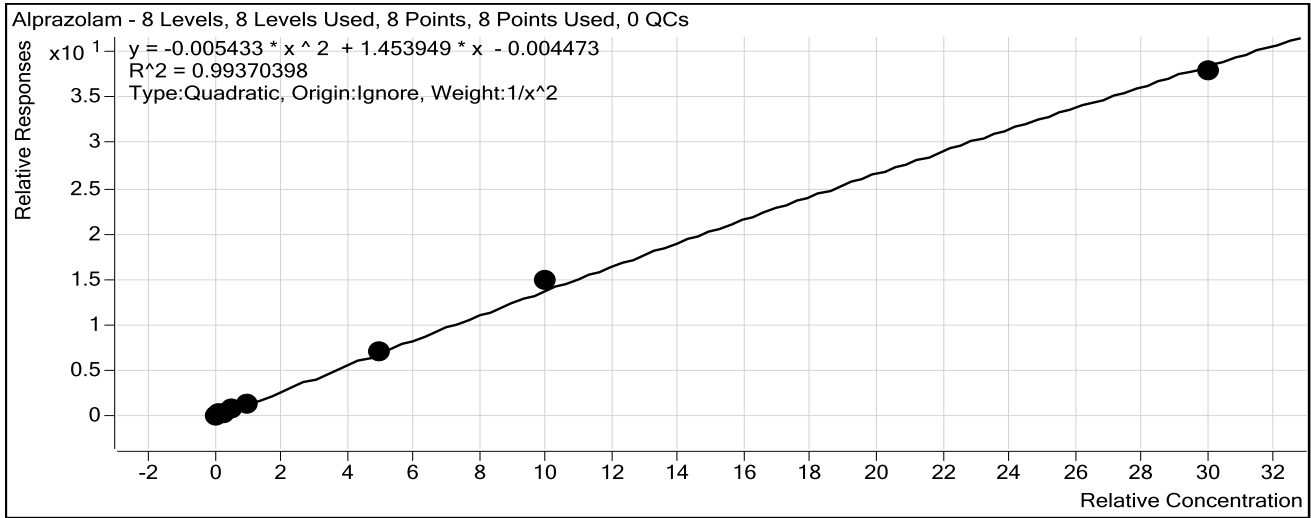
Sample	Level	Enabled	Exp Conc	Final Conc	Accuracy
5 ng/mL	1	<input checked="" type="checkbox"/>	5	5.3	106.8
10 ng/mL	2	<input checked="" type="checkbox"/>	10	11.2	111.6
25 ng/mL	3	<input checked="" type="checkbox"/>	25	22.5	89.8
50 ng/mL	4	<input checked="" type="checkbox"/>	50	48.0	95.9
100 ng/mL	5	<input checked="" type="checkbox"/>	100	95.1	95.1
500 ng/mL	6	<input checked="" type="checkbox"/>	500	495.6	99.1
1000 ng/mL	7	<input checked="" type="checkbox"/>	1000	1018.7	101.9
3000 ng/mL	8	<input checked="" type="checkbox"/>	3000	2993.2	99.8

ISP Forensics Calibration Curve Report

Batch Data Path C:\MassHunter\Data\COMBINED\10-30-15\103015 CS\BZ\QuantResults\103015-BZ-B-
CS.batch.bin

Last Calib Update 11/5/2015 11:30 AM **Analyst Name** ISP TOX

Target Compound Alprazolam
Internal Standard alphahydroxyalprazolam-D5 ISTD



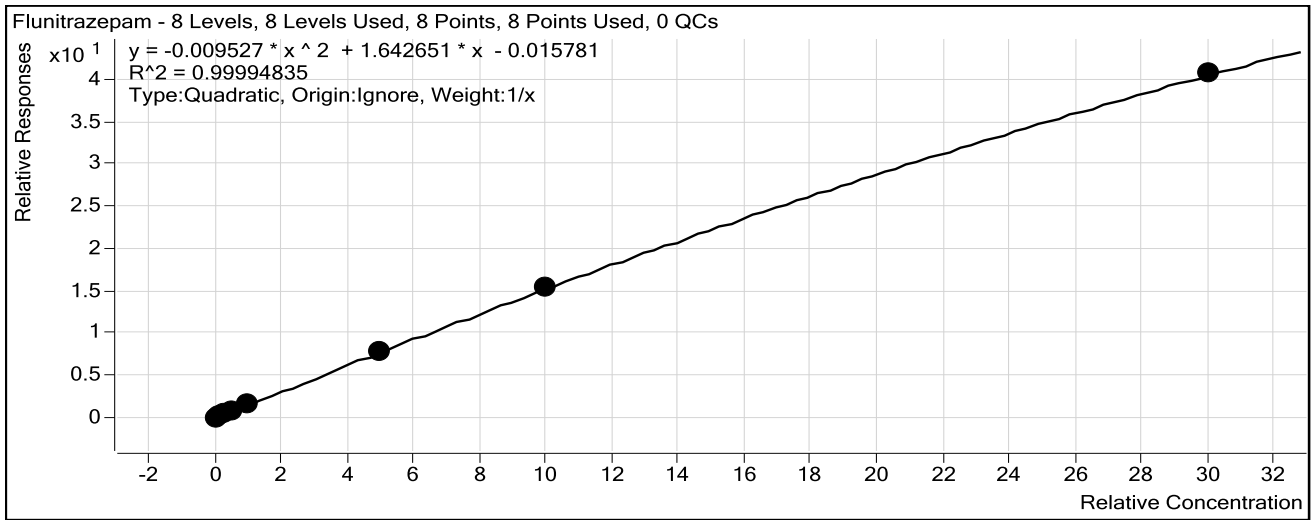
Sample	Level	Enabled	Exp Conc	Final Conc	Accuracy
5 ng/mL	1	<input checked="" type="checkbox"/>	5	5.1	101.2
10 ng/mL	2	<input checked="" type="checkbox"/>	10	9.8	98.2
25 ng/mL	3	<input checked="" type="checkbox"/>	25	23.8	95.0
50 ng/mL	4	<input checked="" type="checkbox"/>	50	55.9	111.8
100 ng/mL	5	<input checked="" type="checkbox"/>	100	90.3	90.3
500 ng/mL	6	<input checked="" type="checkbox"/>	500	491.5	98.3
1000 ng/mL	7	<input checked="" type="checkbox"/>	1000	1076.6	107.7
3000 ng/mL	8	<input checked="" type="checkbox"/>	3000	2926.4	97.5

ISP Forensics Calibration Curve Report

Batch Data Path C:\MassHunter\Data\COMBINED\10-30-15\103015 CS\BZ\QuantResults\103015-BZ-B-
CS.batch.bin

Last Calib Update 11/5/2015 11:30 AM **Analyst Name** ISP TOX

Target Compound *Flunitrazepam*
Internal Standard *Clonazepam-D4 ISTD*



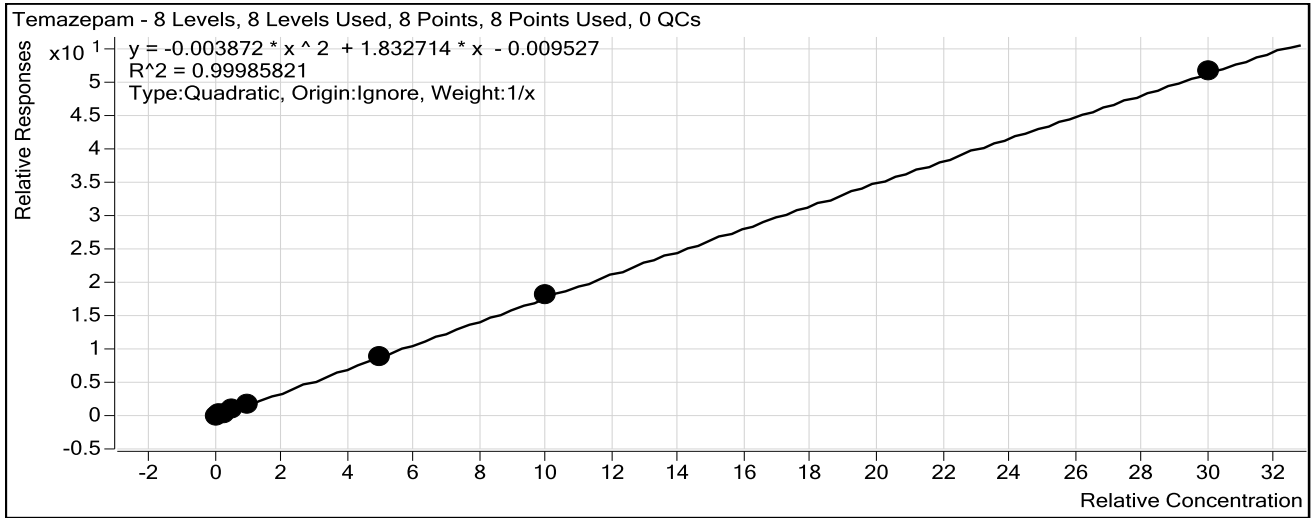
Sample	Level	Enabled	Exp Conc	Final Conc	Accuracy
5 ng/mL	1	<input checked="" type="checkbox"/>	5	4.9	98.6
10 ng/mL	2	<input checked="" type="checkbox"/>	10	10.2	102.0
25 ng/mL	3	<input checked="" type="checkbox"/>	25	23.7	94.7
50 ng/mL	4	<input checked="" type="checkbox"/>	50	51.5	103.0
100 ng/mL	5	<input checked="" type="checkbox"/>	100	102.3	102.3
500 ng/mL	6	<input checked="" type="checkbox"/>	500	498.2	99.6
1000 ng/mL	7	<input checked="" type="checkbox"/>	1000	998.2	99.8
3000 ng/mL	8	<input checked="" type="checkbox"/>	3000	3001.1	100.0

ISP Forensics Calibration Curve Report

Batch Data Path C:\MassHunter\Data\COMBINED\10-30-15\103015 CS\BZ\QuantResults\103015-BZ-B-
CS.batch.bin

Last Calib Update 11/5/2015 11:30 AM **Analyst Name** ISP TOX

Target Compound *Temazepam*
Internal Standard *Oxazepam D5 ISTD*



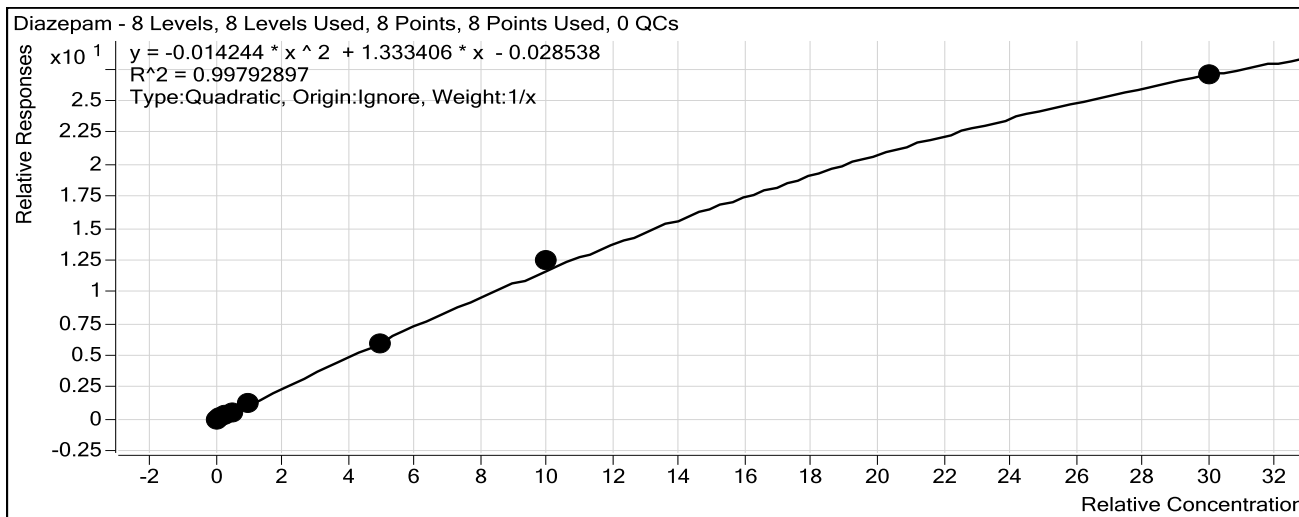
Sample	Level	Enabled	Exp Conc	Final Conc	Accuracy
5 ng/mL	1	<input checked="" type="checkbox"/>	5	4.9	98.2
10 ng/mL	2	<input checked="" type="checkbox"/>	10	9.4	94.2
25 ng/mL	3	<input checked="" type="checkbox"/>	25	24.9	99.5
50 ng/mL	4	<input checked="" type="checkbox"/>	50	54.7	109.4
100 ng/mL	5	<input checked="" type="checkbox"/>	100	99.8	99.8
500 ng/mL	6	<input checked="" type="checkbox"/>	500	493.0	98.6
1000 ng/mL	7	<input checked="" type="checkbox"/>	1000	1003.2	100.3
3000 ng/mL	8	<input checked="" type="checkbox"/>	3000	3000.0	100.0

ISP Forensics Calibration Curve Report

Batch Data Path C:\MassHunter\Data\COMBINED\10-30-15\103015 CS\BZ\QuantResults\103015-BZ-B-
CS.batch.bin

Last Calib Update 11/5/2015 11:30 AM **Analyst Name** ISP TOX

Target Compound *Diazepam*
Internal Standard *Diazepam-D5 ISTD*



Sample	Level	Enabled	Exp Conc	Final Conc	Accuracy
5 ngmL	1	<input checked="" type="checkbox"/>	5	5.9	118.0
10 ngmL	2	<input checked="" type="checkbox"/>	10	10.3	102.9
25 ngmL	3	<input checked="" type="checkbox"/>	25	22.7	90.9
50 ngmL	4	<input checked="" type="checkbox"/>	50	48.4	96.8
100 ngmL	5	<input checked="" type="checkbox"/>	100	92.3	92.3
500 ngmL	6	<input checked="" type="checkbox"/>	500	466.8	93.4
1000 ngmL	7	<input checked="" type="checkbox"/>	1000	1066.9	106.7
3000 ngmL	8	<input checked="" type="checkbox"/>	3000	2966.6	98.9